



# Labor Market Overview

---

Governor's Workforce Development Board

April 2022

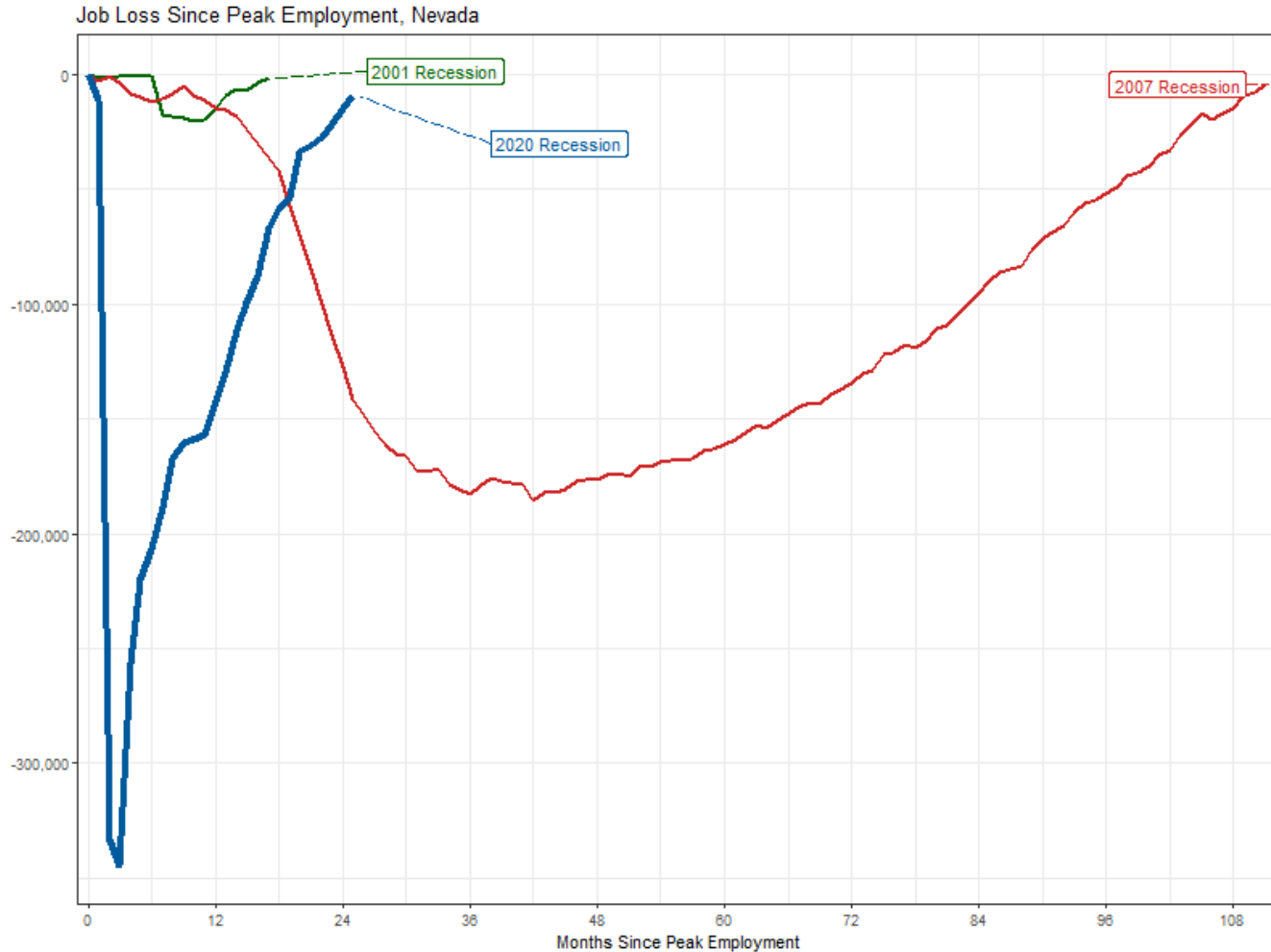
Elisa Cafferata, Director

Christopher Sewell, Deputy Director

David Schmidt, Chief Economist

*Prepared by the Research & Analysis Bureau*

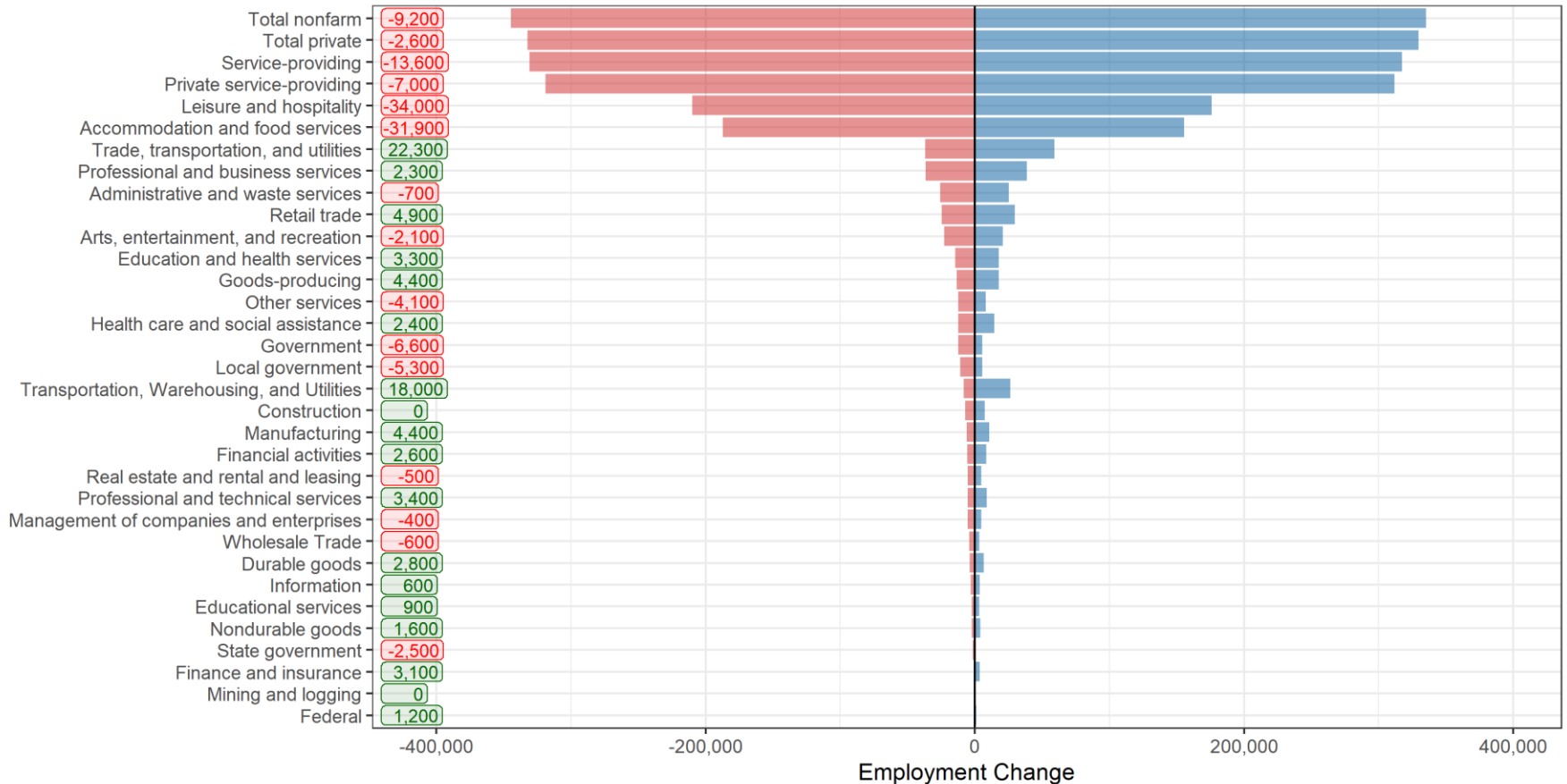
# Jobs Lost Since Prior Peak



# Statewide Employment Data

## Jobs Lost and Gained, Nevada

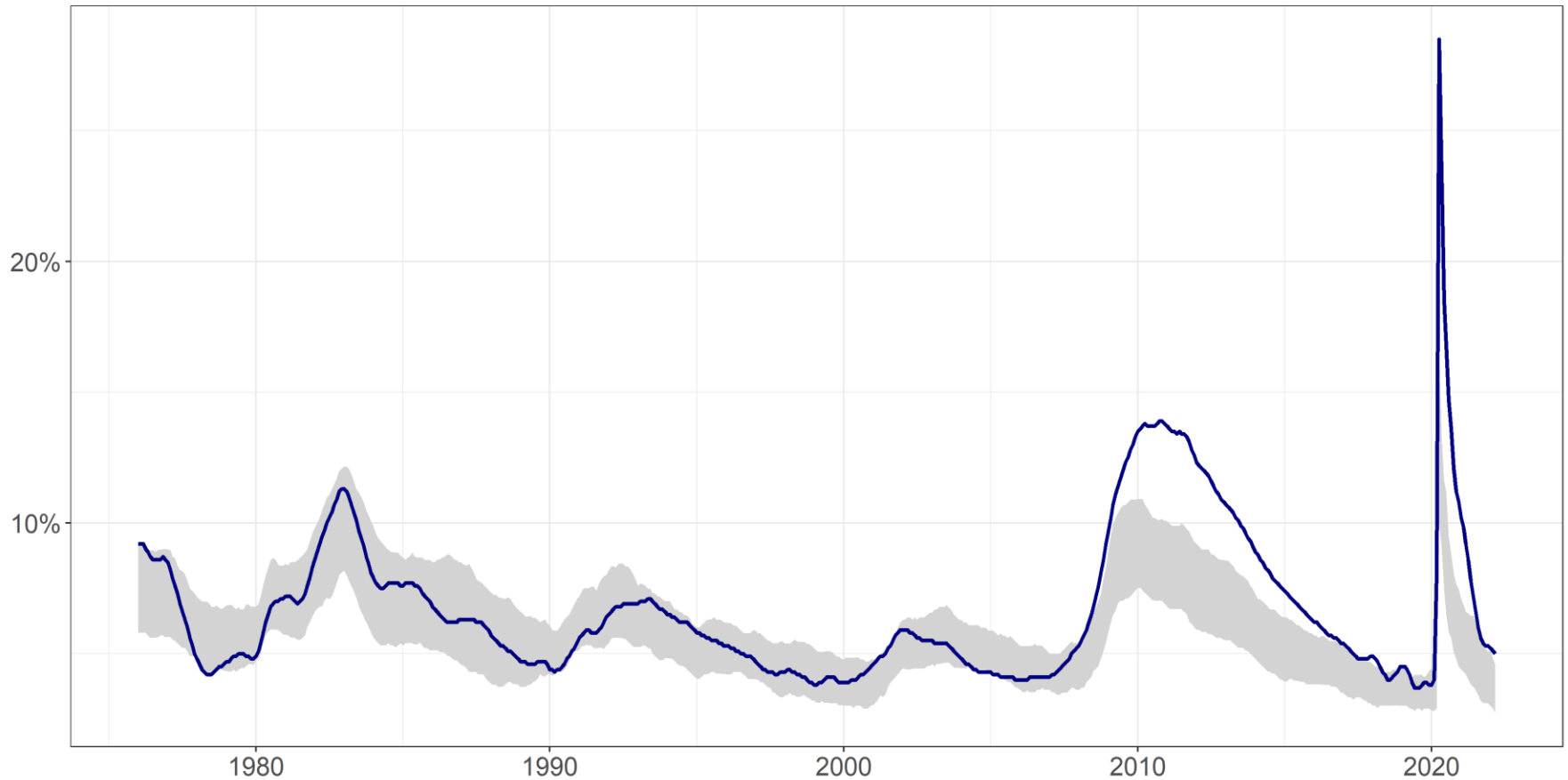
Jobs Lost Feb 2020 to May 2020, Gained May 2020 to March 2022



Seasonally Adjusted Data

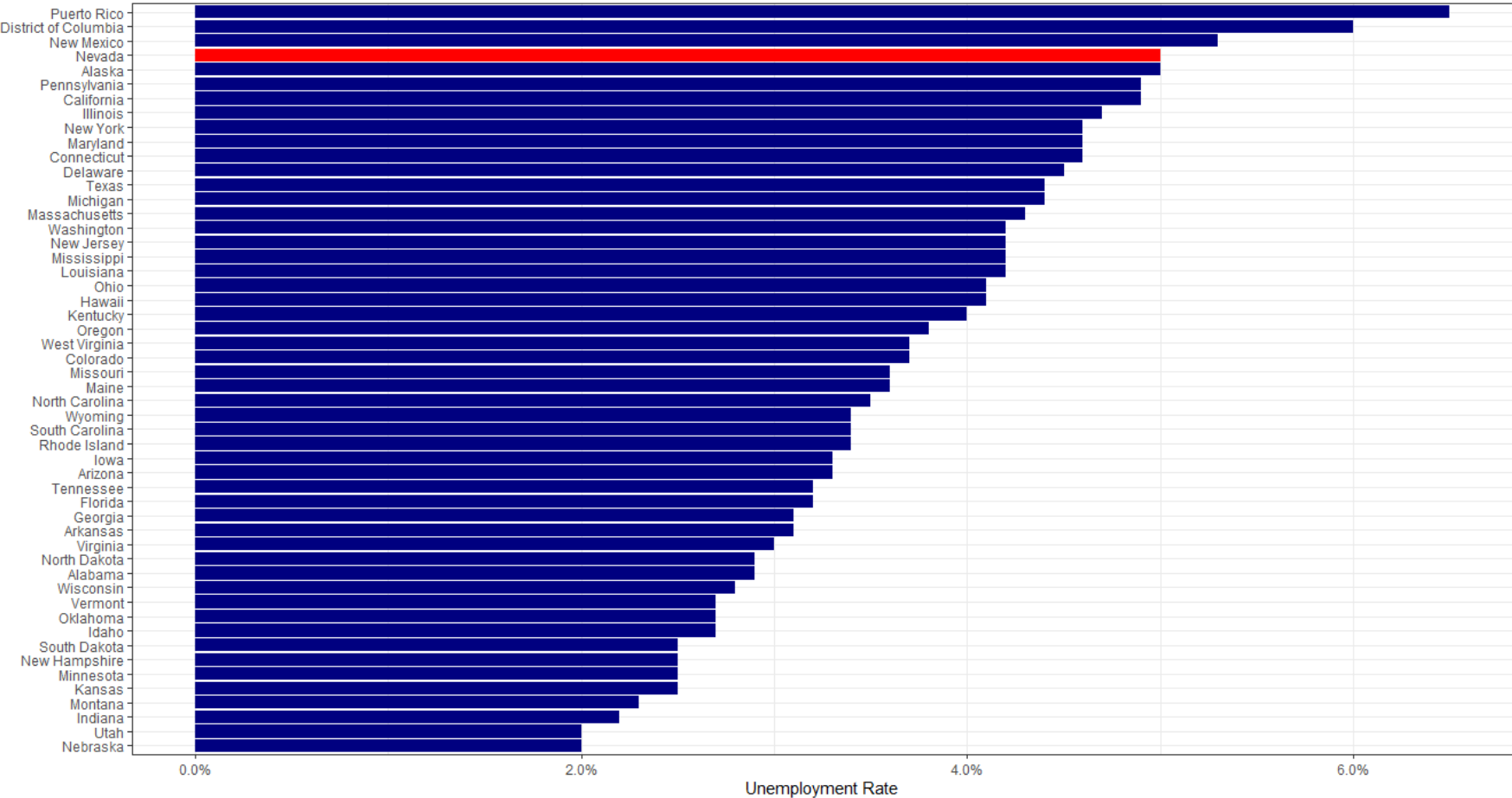
# NV Unemployment Data

Unemployment Rate for Nevada and Other States  
Grey area represents 20th to 80th percentile for all states



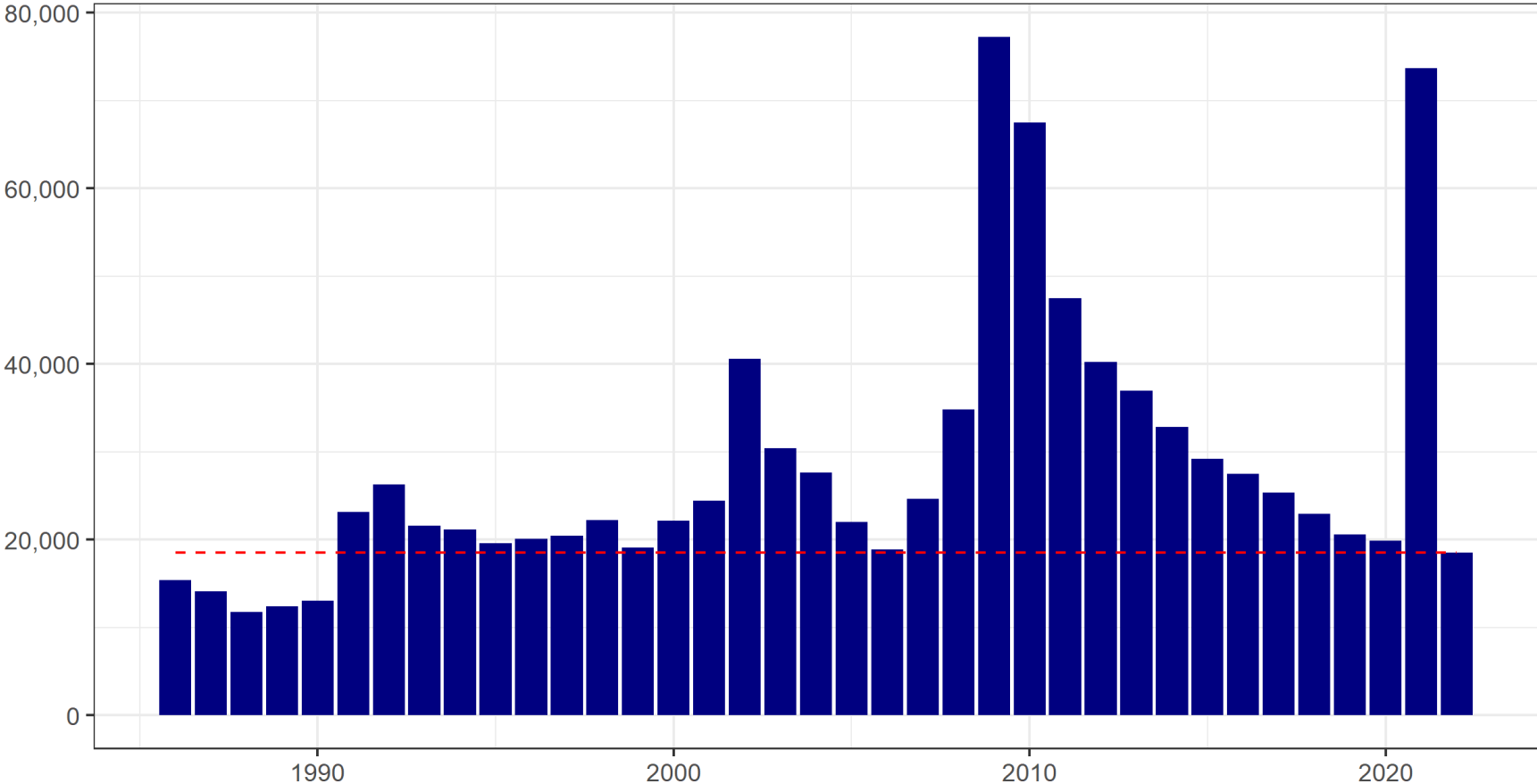
# LAUS Unemployment Data

Unemployment Rate Ranking by State



# UI Claims Data

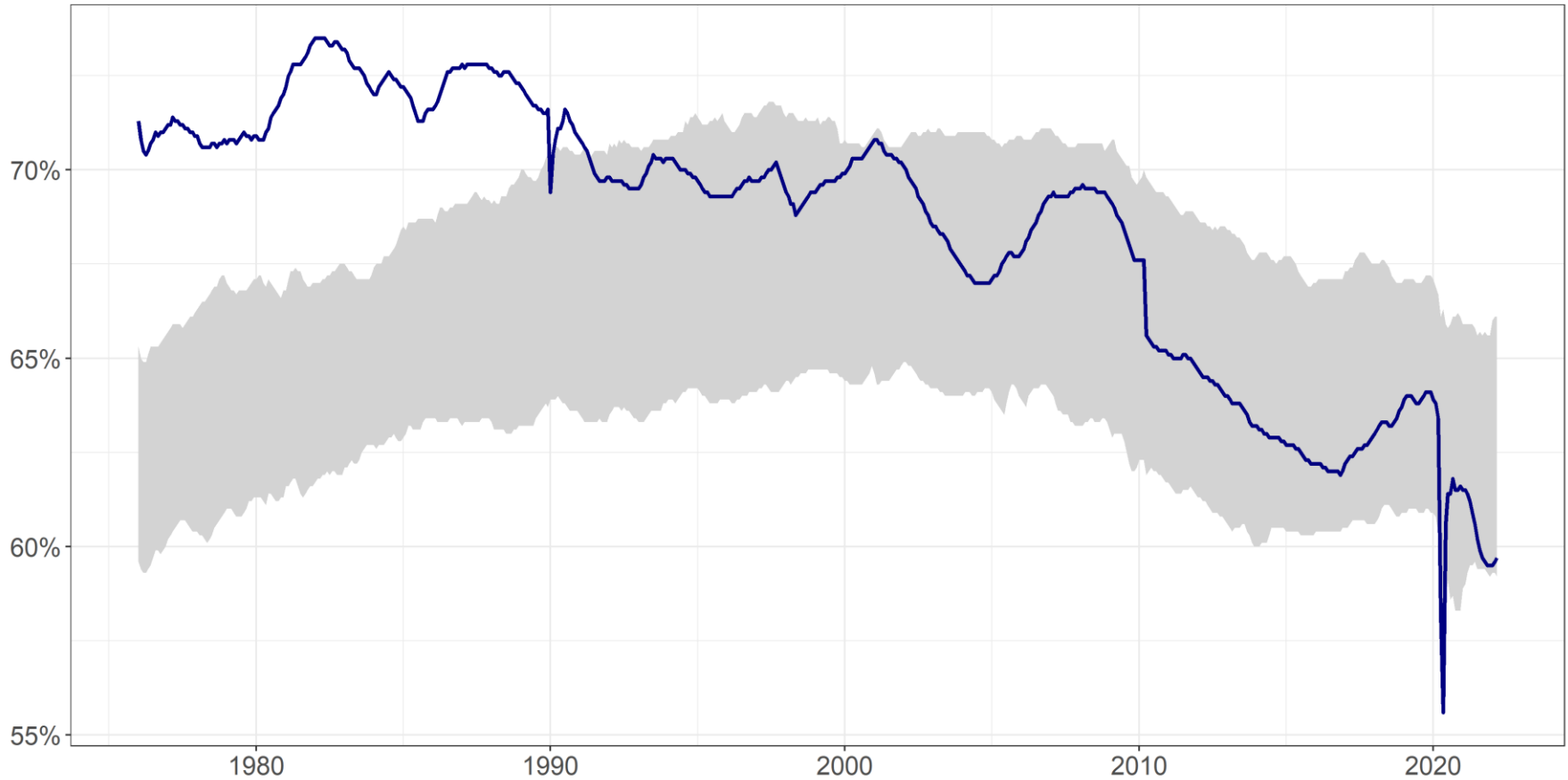
Average Weekly UI Claims in February



# NV Participation Rate

## Labor Force Participation Rate for Nevada and Other States

Grey area represents 20th to 80th percentile for all states



# High Unemployment Report

---

NRS 232.935 5(b) mandates the Governor's Workforce Investment Board require all applicable agencies which provide workforce services to coordinate efforts and resources in order to reduce the rate of unemployment for specific demographic groups when certain thresholds are met:

1. When the unemployment rate is at least double (200 percent) the rate of unemployment for the county as a whole.
2. When the unemployment rate is at least four percentage points higher than the rate of unemployment for the county as a whole.
3. When the unemployment rate has been higher than the rate of unemployment for the county as a whole for at least three consecutive years.

This report is produced quarterly and is published here:

<https://nevadaworkforce.com/docs/Other-Publications/Demographics-Report/Current-Release.pdf>



# High Unemployment Groups: 2020

Most Current Data As Of: 2020 Data for all counties is a five-year average, unless otherwise indicated		Carson City	Churchill County	Clark County - 5 Year	Douglas County	Elko County	Esmeralda County	Eureka County	Humboldt County	Lander County	Lincoln County	Lyon County	Mineral County	Nye County	Pershing County	Storey County	Washoe County - 5 Year	White Pine County
Population	County Total: Ages 16+	4.6%	5.9%	7.0%	4.1%	4.3%	3.0%	0.0%	3.8%	9.2%	5.1%	8.0%	12.1%	8.7%	8.8%	3.7%	5.2%	2.5%
	County Total: Ages 20-64	4.3%	5.3%	6.5%	4.1%	3.7%	2.0%	0.0%	4.2%	9.2%	4.2%	7.7%	13.3%	7.6%	9.3%	3.4%	4.6%	2.1%
	County Total: Ages 25-64	3.7%	3.7%	6.1%	3.5%	4.0%	2.0%	0.0%	3.4%	8.1%	2.4%	7.5%	12.7%	7.3%	10.0%	1.3%	4.1%	2.4%
Age	16-19	13.7%	17.6%	20.3%	11.0%	13.6%	0.0%	0.0%	2.1%	32.2%	20.5%	16.7%	12.0%	22.8%	27.1%	0.0%	22.1%	8.3%
	20-24	9.5%	21.2%	10.3%	11.2%	1.3%	0.0%	0.0%	12.6%	44.3%	18.8%	10.2%	16.1%	10.4%	1.4%	21.7%	8.3%	0.0%
	25-29	3.7%	5.8%	7.4%	4.3%	2.3%	16.7%	0.0%	5.1%	8.3%	0.0%	15.2%	16.7%	14.9%	17.3%	0.0%	6.1%	4.1%
	30-34	4.5%	9.4%	6.4%	6.9%	5.6%	0.0%	0.0%	2.1%	16.9%	0.0%	4.5%	39.3%	8.3%	10.6%	0.0%	3.6%	1.0%
	35-44	2.8%	2.6%	5.7%	3.3%	4.7%	0.0%	0.0%	2.1%	12.5%	0.0%	6.5%	5.0%	4.0%	9.2%	0.0%	3.4%	4.3%
	45-54	1.9%	1.7%	5.6%	2.1%	2.3%	0.0%	0.0%	4.4%	5.1%	0.0%	6.2%	12.0%	5.6%	7.7%	3.8%	3.6%	0.1%
	55-59	6.9%	2.2%	6.1%	4.3%	6.8%	7.0%	0.0%	3.4%	0.0%	0.0%	6.4%	4.7%	8.3%	9.6%	2.6%	4.8%	2.7%
	60-64	4.9%	4.6%	5.4%	1.7%	2.7%	0.0%	0.0%	3.4%	0.0%	16.1%	7.6%	7.7%	8.1%	0.0%	0.0%	3.8%	0.0%
	65-74	5.2%	8.7%	6.9%	0.3%	5.9%	14.7%	0.0%	0.0%	0.0%	0.0%	5.9%	0.0%	16.3%	0.0%	6.6%	3.2%	7.1%
75+	2.3%	0.0%	8.8%	3.0%	1.0%	0.0%	0.0%	0.0%	0.0%	0.0%	4.7%	0.0%	0.0%	0.0%	0.0%	6.4%	0.0%	
Race / Ethnicity (Age 16 or Older)	White, Not Hispanic or Latino	4.6%	5.2%	6.4%	3.8%	3.8%	2.4%	0.0%	3.5%	8.5%	5.2%	7.4%	10.7%	9.4%	8.3%	4.3%	4.3%	1.9%
	Black	2.5%	12.3%	11.4%	0.0%	0.7%	0.0%	0.0%	2.0%	100.0%	0.0%	9.7%	0.0%	14.3%	50.0%	0.0%	8.0%	100.0%
	Hispanic	5.0%	3.4%	6.4%	5.8%	4.1%	7.7%	0.0%	2.5%	8.4%	0.0%	10.1%	0.0%	2.2%	8.6%	0.0%	7.4%	0.0%
	American Indian & Alaska Native	9.5%	19.9%	9.4%	14.1%	6.8%	0.0%	0.0%	10.8%	23.1%	0.0%	8.4%	23.6%	11.1%	17.3%	0.0%	11.4%	20.4%
	Asian	1.3%	0.0%	5.0%	3.2%	0.0%	0.0%	0.0%	0.0%	0.0%	0.0%	4.2%	0.0%	0.0%	0.0%	0.0%	3.5%	0.0%
	Pacific Islander or Native Hawaiian	0.0%	0.0%	7.9%	0.0%	0.0%	0.0%	0.0%	0.0%	0.0%	0.0%	0.0%	0.0%	0.0%	0.0%	0.0%	4.6%	0.0%
	Some Other Race	6.2%	0.0%	5.8%	4.7%	13.4%	0.0%	0.0%	6.1%	0.0%	0.0%	6.1%	0.0%	2.7%	13.5%	0.0%	7.5%	0.0%
	Two or More Races	0.0%	10.5%	10.1%	1.4%	4.1%	0.0%	0.0%	13.7%	0.0%	0.0%	21.9%	0.0%	16.4%	0.0%	0.0%	8.0%	5.3%
Gender & Children (Age 20-64)	Male	4.2%	4.9%	6.3%	4.7%	3.7%	0.0%	0.0%	4.4%	7.4%	7.1%	5.9%	18.5%	5.9%	9.0%	5.9%	4.6%	1.1%
	Female	4.4%	5.7%	6.7%	3.5%	3.6%	3.9%	0.0%	4.1%	12.9%	0.0%	9.9%	9.0%	9.8%	9.8%	0.0%	4.6%	3.4%
	Female, With Children 0-17	3.4%	2.7%	6.6%	3.8%	3.5%	0.0%	0.0%	0.2%	24.6%	0.0%	9.6%	2.8%	2.1%	15.8%	0.0%	4.3%	8.5%
	Female, With Children 0-5	0.7%	7.1%	9.3%	2.1%	0.0%	0.0%	0.0%	0.0%	17.6%	0.0%	6.7%	18.8%	10.6%	51.3%	0.0%	5.1%	0.0%
	Female, With Children 0-5 & 6-17	8.1%	3.5%	8.2%	9.7%	9.1%	0.0%	0.0%	0.0%	49.6%	0.0%	17.0%	0.0%	0.0%	0.0%	0.0%	6.8%	29.1%
	Female, With Children 6-17	2.5%	1.1%	5.1%	2.6%	3.4%	0.0%	0.0%	0.3%	13.0%	0.0%	7.4%	0.0%	0.0%	20.7%	0.0%	3.2%	3.3%
Education (Age 25-64)	Less than HS	5.5%	8.7%	6.4%	13.6%	6.3%	9.8%	0.0%	7.0%	0.0%	0.0%	11.3%	9.5%	7.9%	23.9%	0.0%	6.7%	4.5%
	HS or equiv	6.0%	2.2%	7.6%	2.9%	6.8%	0.0%	0.0%	1.5%	19.9%	5.4%	8.0%	16.7%	7.8%	8.3%	0.0%	5.4%	2.4%
	Some college or Associate deg	2.2%	4.3%	6.3%	2.7%	1.8%	1.9%	0.0%	5.5%	5.6%	0.0%	5.0%	8.7%	8.3%	10.0%	0.0%	3.8%	0.5%
	Bachelor's degree or higher	2.5%	3.3%	4.0%	3.1%	2.0%	0.0%	0.0%	0.5%	0.0%	0.0%	10.8%	12.6%	1.9%	4.3%	3.6%	2.6%	5.1%
Poverty Status (Age 20-64)	Below poverty level	20.6%	18.3%	25.1%	14.7%	16.4%	0.0%	0.0%	21.6%	45.5%	21.4%	40.3%	16.0%	35.5%	44.8%	0.0%	19.0%	7.1%
	At or above poverty level	3.4%	4.4%	5.0%	3.5%	2.7%	2.0%	0.0%	2.7%	7.4%	3.9%	6.1%	12.8%	4.3%	8.1%	3.5%	3.6%	1.7%
Other (20-64)	People with any disability	9.8%	5.9%	11.4%	4.9%	12.0%	0.0%	0.0%	8.2%	7.8%	34.5%	8.4%	9.1%	17.3%	2.8%	0.0%	8.1%	7.5%

# High Unemployment Groups: 2020

Most Current Data As Of: 2020 Data for all counties is a five-year average, unless otherwise indicated		Carson City	Churchill County	Clark County - 5 Year	Douglas County	Elko County	Esmeralda County	Eureka County	Humboldt County	Lander County	Lincoln County	Lyon County	Mineral County	Nye County	Pershing County	Storey County	Washoe County - 5 Year	White Pine County	
All Unemployed People, Orange Indicates High Unemployment Rate	Population	County Total: Ages 16+	1,256	693	79,152	923	1,176	12	0	324	248	94	2,032	208	1,448	210	59	12,987	96
		County Total: Ages 20-64	1,043	553	67,241	794	917	7	0	312	229	68	1,746	202	1,125	186	48	10,341	74
		County Total: Ages 25-64	804	337	56,634	623	884	7	0	228	195	35	1,551	159	969	185	16	8,142	76
	Age	16-19	126	81	7,725	99	194	0	0	9	19	25	175	6	179	23	0	2,183	10
		20-24	237	284	10,869	174	35	0	0	90	35	33	204	44	160	2	33	2,164	0
		25-29	109	79	10,230	85	71	3	0	44	25	0	455	19	226	66	0	1,954	16
		30-34	131	111	8,711	152	174	0	0	24	65	0	120	72	119	24	0	1,056	3
		35-44	152	51	14,467	128	267	0	0	33	78	0	340	16	132	43	0	1,647	43
		45-54	104	41	13,207	92	131	0	0	78	26	0	322	33	191	35	12	1,749	1
		55-59	202	32	6,018	132	190	4	0	21	0	0	175	13	190	16	4	1,066	12
		60-64	99	35	3,560	40	46	0	0	25	0	35	141	6	108	0	0	685	0
		65-74	84	70	3,403	5	62	5	0	0	0	0	85	0	139	0	11	419	11
	75+	12	0	784	13	1	0	0	0	0	0	10	0	0	0	0	0	121	0
	Race / Ethnicity (Age 16 or Older)	White, Not Hispanic or Latino	829	458	30,675	676	697	8	0	205	162	94	1,398	108	1,125	152	60	6,719	56
		Black	9	36	14,645	0	2	0	0	1	30	0	25	0	65	4	0	517	7
		Hispanic	333	49	22,475	183	277	4	0	54	53	0	481	0	63	35	0	4,530	0
		American Indian & Alaska Native	58	110	948	40	84	0	0	33	33	0	46	101	38	19	0	436	30
		Asian	14	0	6,021	16	0	0	0	0	0	0	12	0	0	0	0	546	0
		Pacific Islander or Native Hawaiian	0	0	685	0	0	0	0	0	0	0	0	0	0	0	0	78	0
		Some Other Race	150	0	8,097	42	223	0	0	45	0	0	124	0	41	20	0	1,725	0
	Two or More Races	0	62	8,007	13	60	0	0	30	0	0	274	0	149	0	0	1,170	4	
	Gender & Children (Age 20-64)	Male	556	299	34,930	474	543	0	0	187	123	68	729	128	492	105	49	5,588	22
		Female	484	248	32,134	325	364	7	0	130	107	0	1,023	75	633	81	0	4,750	52
		Female, With Children 0-17	135	42	10,722	117	138	0	0	2	106	0	390	6	38	67	0	1,500	43
		Female, With Children 0-5	4	18	3,197	11	0	0	0	0	16	0	49	6	38	39	0	391	0
		Female, With Children 0-5 & 6-17	69	14	2,462	54	60	0	0	0	62	0	171	0	0	0	0	440	32
		Female, With Children 6-17	63	10	4,993	52	79	0	0	2	28	0	172	0	0	28	0	664	11
	Education (Age 25-64)	Less than HS	142	40	7,209	147	163	4	0	77	0	0	281	17	130	48	0	1,428	9
		HS or equiv	343	58	19,229	123	476	0	0	33	132	35	522	92	391	64	0	2,518	29
		Some college or Associate deg	179	181	19,693	191	147	3	0	108	63	0	445	34	416	60	0	2,461	5
Bachelor's degree or higher		132	60	10,006	168	87	0	0	7	0	0	298	16	30	12	17	1,713	32	
Poverty Status (Age 20-64)	Below poverty level	257	106	19,398	164	294	0	0	132	55	6	428	41	560	30	0	2,849	20	
	At or above poverty level	782	420	47,786	639	620	7	0	184	175	62	1,320	162	569	156	47	7,542	55	
Other (20-64)	People with any disability	225	36	6,840	45	209	0	0	48	15	29	133	6	252	2	0	1,191	21	

# For More Information

---

- Research & Analysis Bureau

[NevadaWorkforce.com](http://NevadaWorkforce.com)

[detrImi@detr.nv.gov](mailto:detrImi@detr.nv.gov)

- Workforce and UI System

[employnv.gov](http://employnv.gov)

[ui.nv.gov](http://ui.nv.gov)

[vrnevada.org](http://vrnevada.org)

- DETR Home

[detr.nv.gov](http://detr.nv.gov)

This workforce product was funded by a grant awarded by the U.S. Department of Labor's Employment and Training Administration. The product was created by the recipient and does not necessarily reflect the official position of the U.S. Department of Labor. The U.S. Department of Labor makes no guarantees, warranties, or assurances of any kind, express or implied, with respect to such information, including any information on linked sites and including, but not limited to, accuracy of the information or its completeness, timeliness, usefulness, adequacy, continued availability, or ownership. This product is copyrighted by the institution that created it. Internal use by an organization and/or personal use by an individual for non-commercial purposes is permissible. All other uses require the prior authorization of the copyright owner.