



Labor Force Demographics

Additional Details on Selected Groups

Presented to GWDB Barriers Subcommittee

April 2023

Chris Sewell, Director

Troy Jordan & Josh Marhevka, Deputy Directors

David Schmidt, Chief Economist

Prepared by the Research & Analysis Bureau

High Unemployment Report

NRS 232.935 5(b) mandates the Governor's Workforce Investment Board require all applicable agencies which provide workforce services to coordinate efforts and resources in order to reduce the rate of unemployment for specific demographic groups when certain thresholds are met:

1. When the unemployment rate is at least double (200 percent) the rate of unemployment for the county as a whole.
2. When the unemployment rate is at least four percentage points higher than the rate of unemployment for the county as a whole.
3. When the unemployment rate has been higher than the rate of unemployment for the county as a whole for at least three consecutive years.

This report is produced quarterly and is published here:

<https://nevadaworkforce.com/docs/Other-Publications/Demographics-Report/Current-Release.pdf>

Prior Analysis

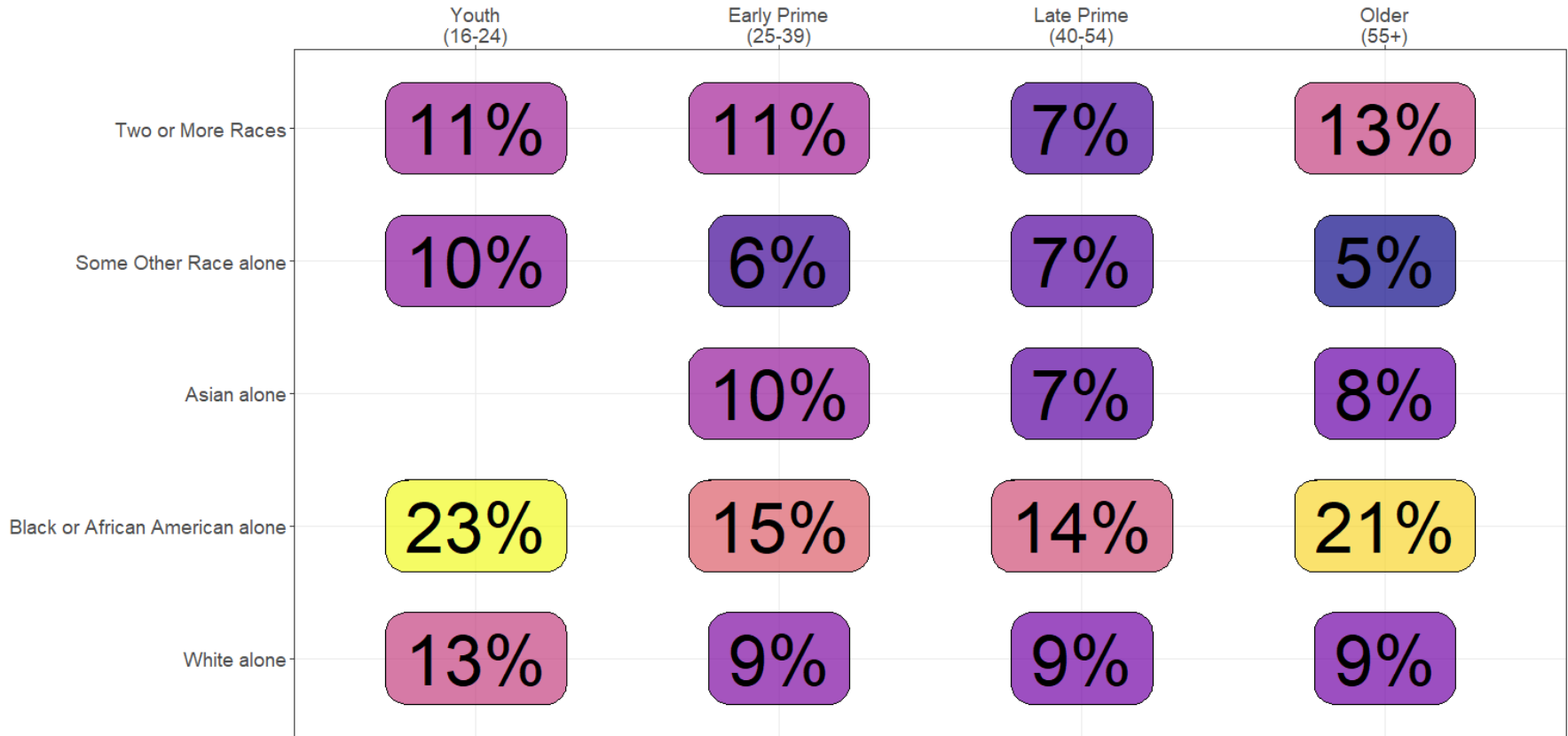
Certain groups have persistently higher rates of unemployment, and often lower rates of labor force participation. Based on prior analysis, the following groups were selected for a more detailed analysis:

- Young black males in Southern Nevada
- Women with children
- People with disabilities

The following analysis will generally focus on the entire state of Nevada, to allow for the largest possible sample size.

Group 1: Young Black Males

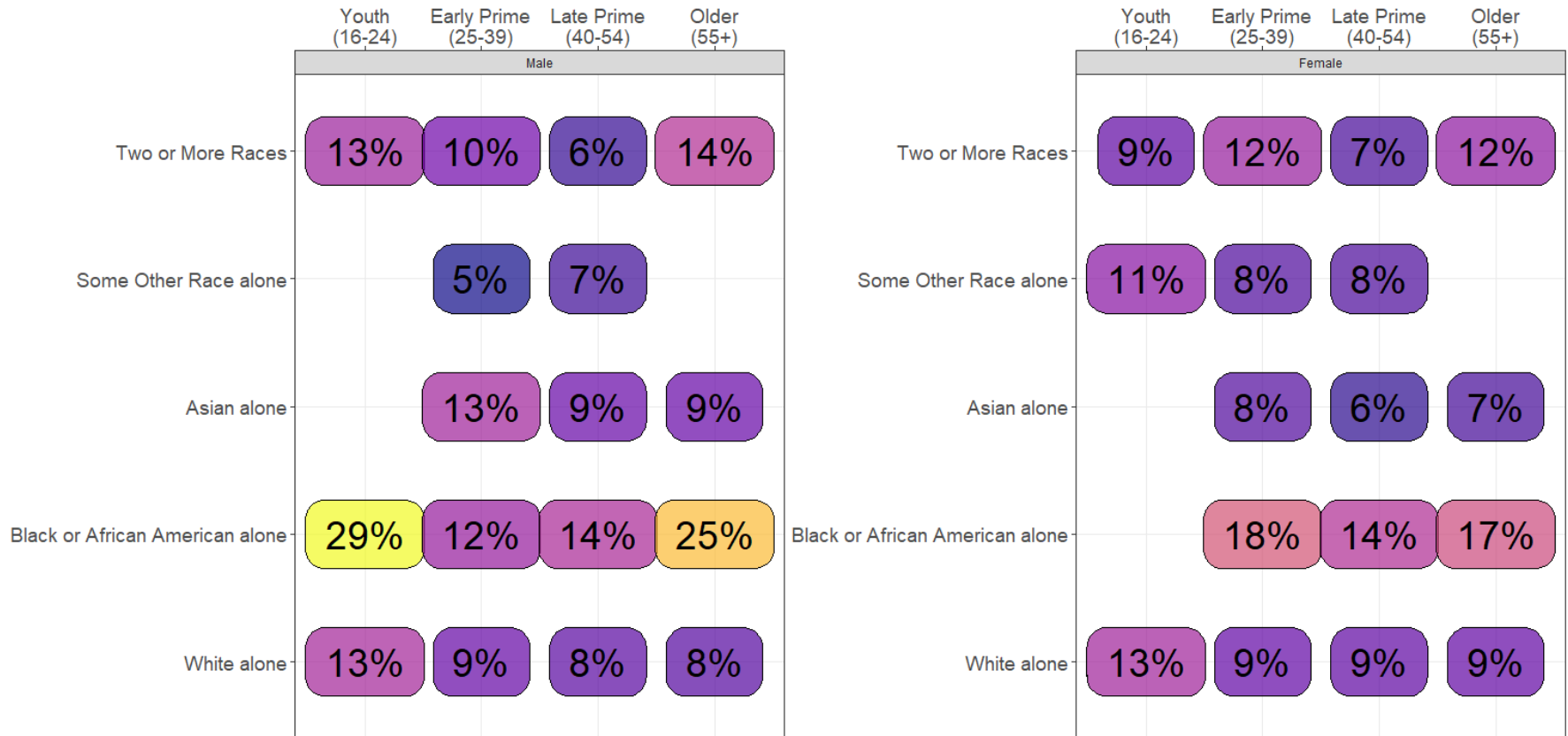
Unemployment Rate by Age and Race, 2021 Average



Data from 2021 American Community Survey 1-year estimates.
Derived from public use microdata

Group 1: Young Black Males

Unemployment Rate by Age and Race, 2021 Average



Data from 2021 American Community Survey 1-year estimates. Derived from public use microdata

Group 1: Young Black Males



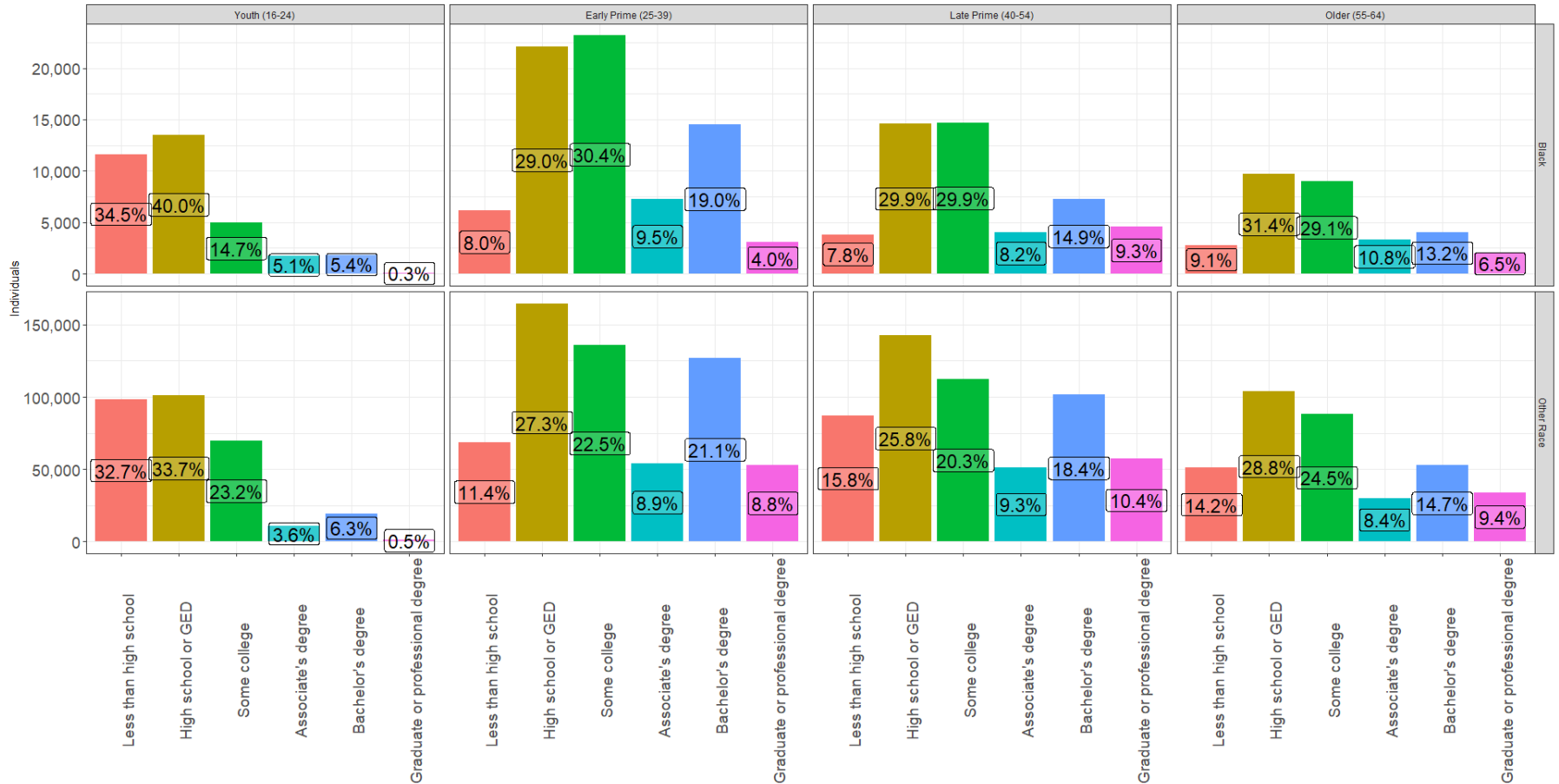
Group 1: Young Black Males

Comparing Hours Worked and Employment Status by Age and Race



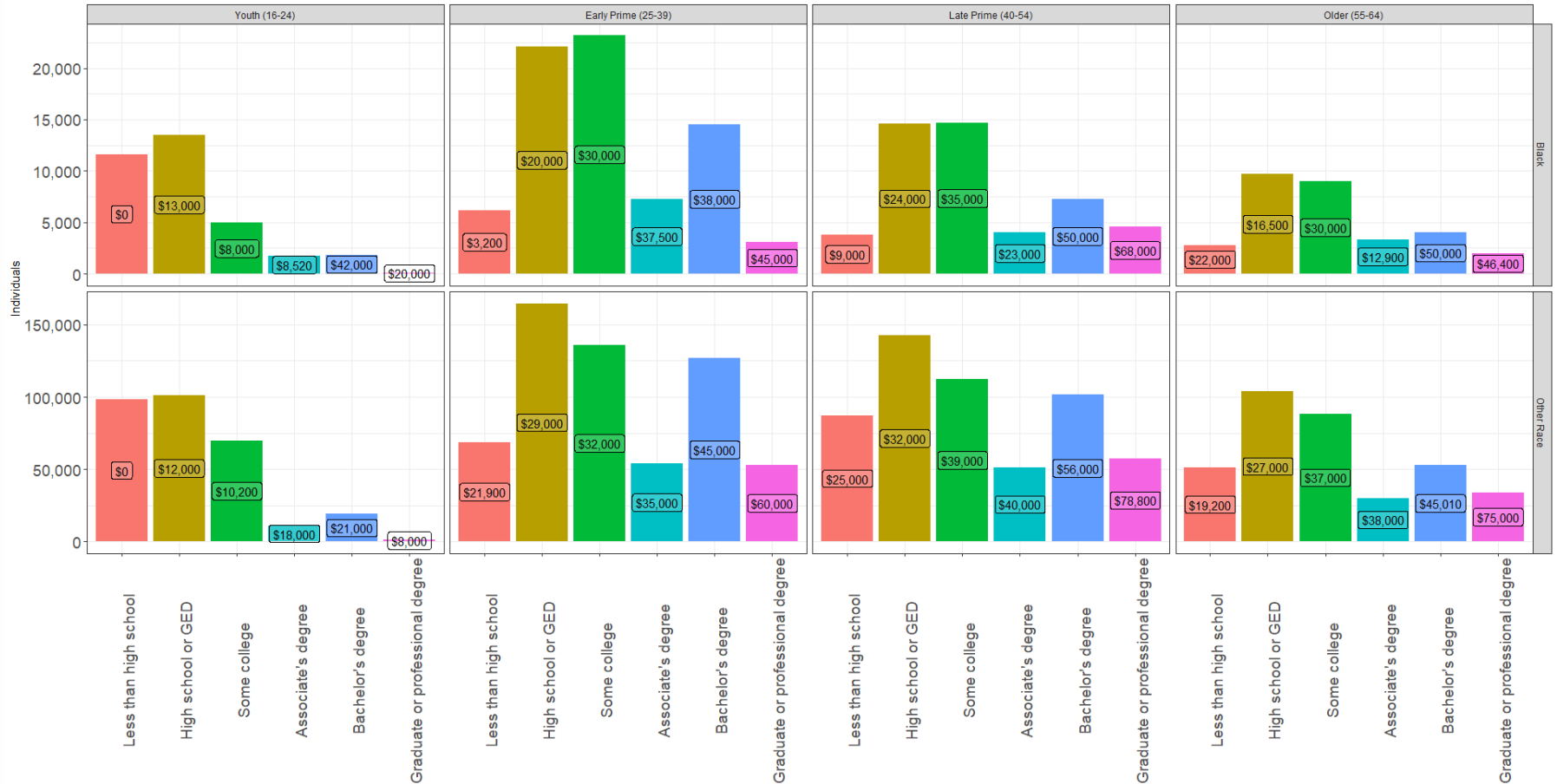
Group 1: Young Black Males

Comparing Educational Attainment



Group 1: Young Black Males

Comparing Educational Attainment



Group 1: Young Black Males

All Youth, South

\$722

Median Quarterly Earnings 1 Quarter After Exit

\$756

Median Quarterly Earnings 2 Quarters After Exit

\$1,309

Median Quarterly Earnings 3 Quarters After Exit

\$1,351

Median Quarterly Earnings 4 Quarters After Exit

All Male Youth, South

\$416

Median Quarterly Earnings 1 Quarter After Exit

\$445

Median Quarterly Earnings 2 Quarters After Exit

\$780

Median Quarterly Earnings 3 Quarters After Exit

\$862

Median Quarterly Earnings 4 Quarters After Exit

All Black Male Youth, South

\$244

Median Quarterly Earnings 1 Quarter After Exit

\$240

Median Quarterly Earnings 2 Quarters After Exit

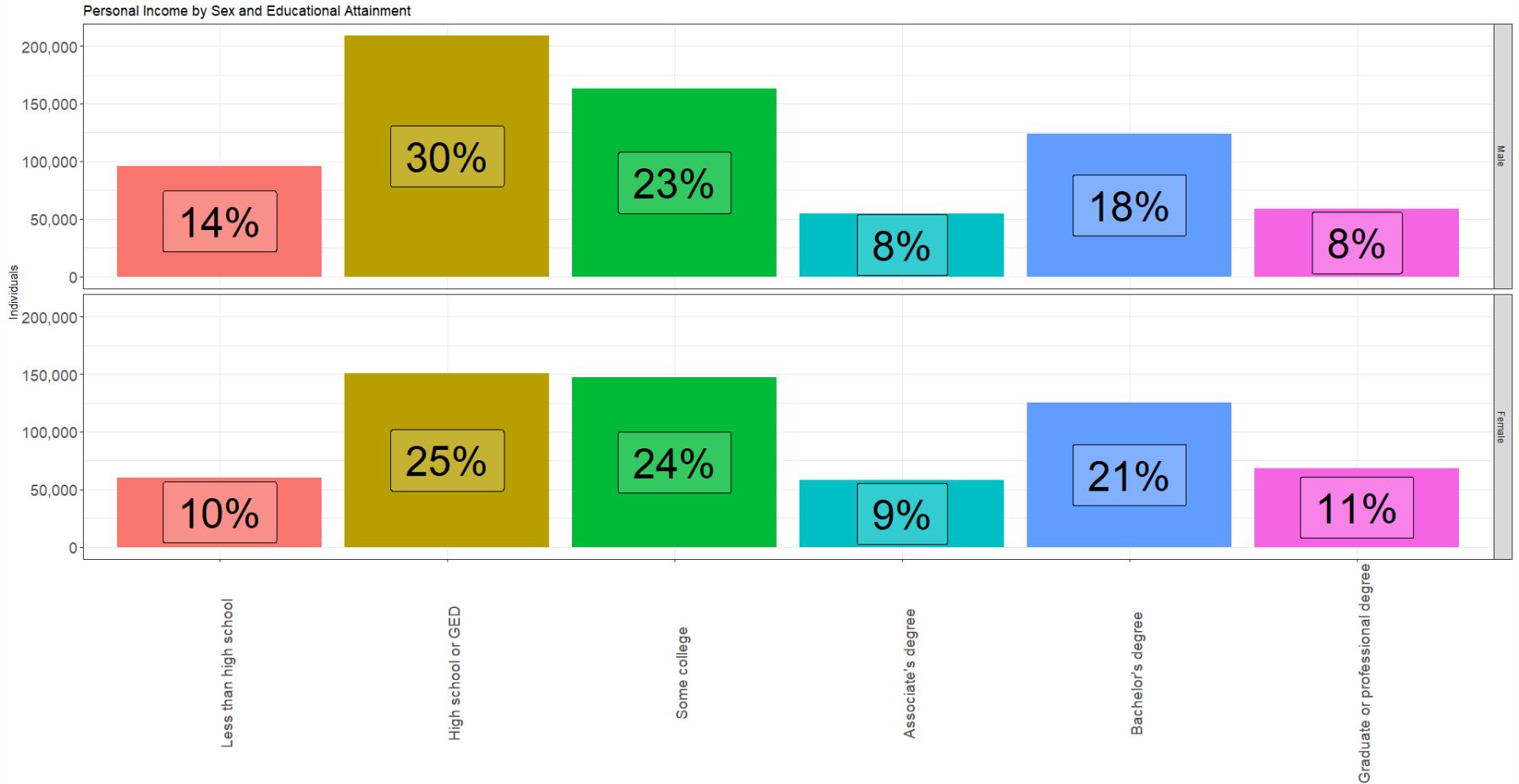
\$382

Median Quarterly Earnings 3 Quarters After Exit

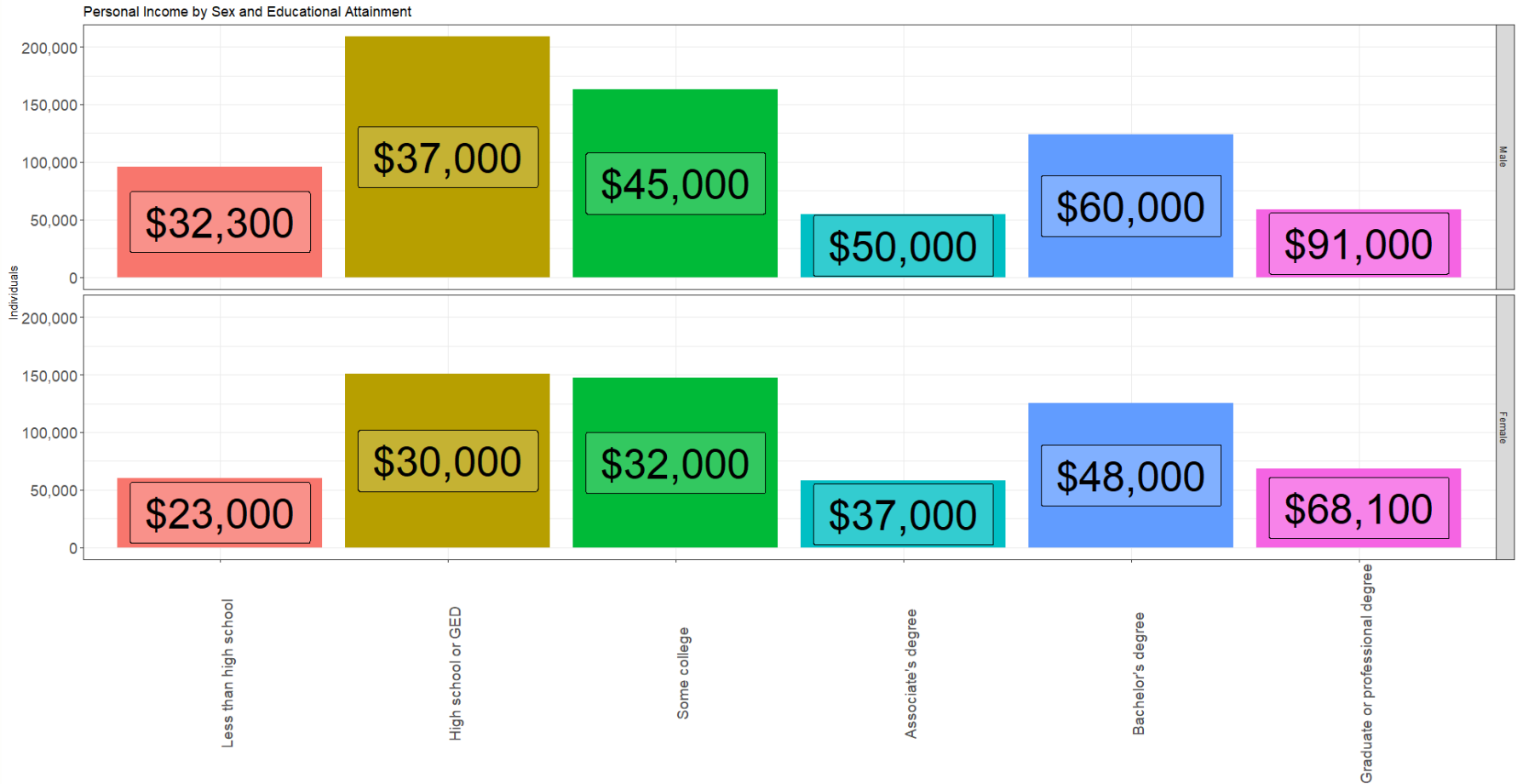
\$457

Median Quarterly Earnings 4 Quarters After Exit

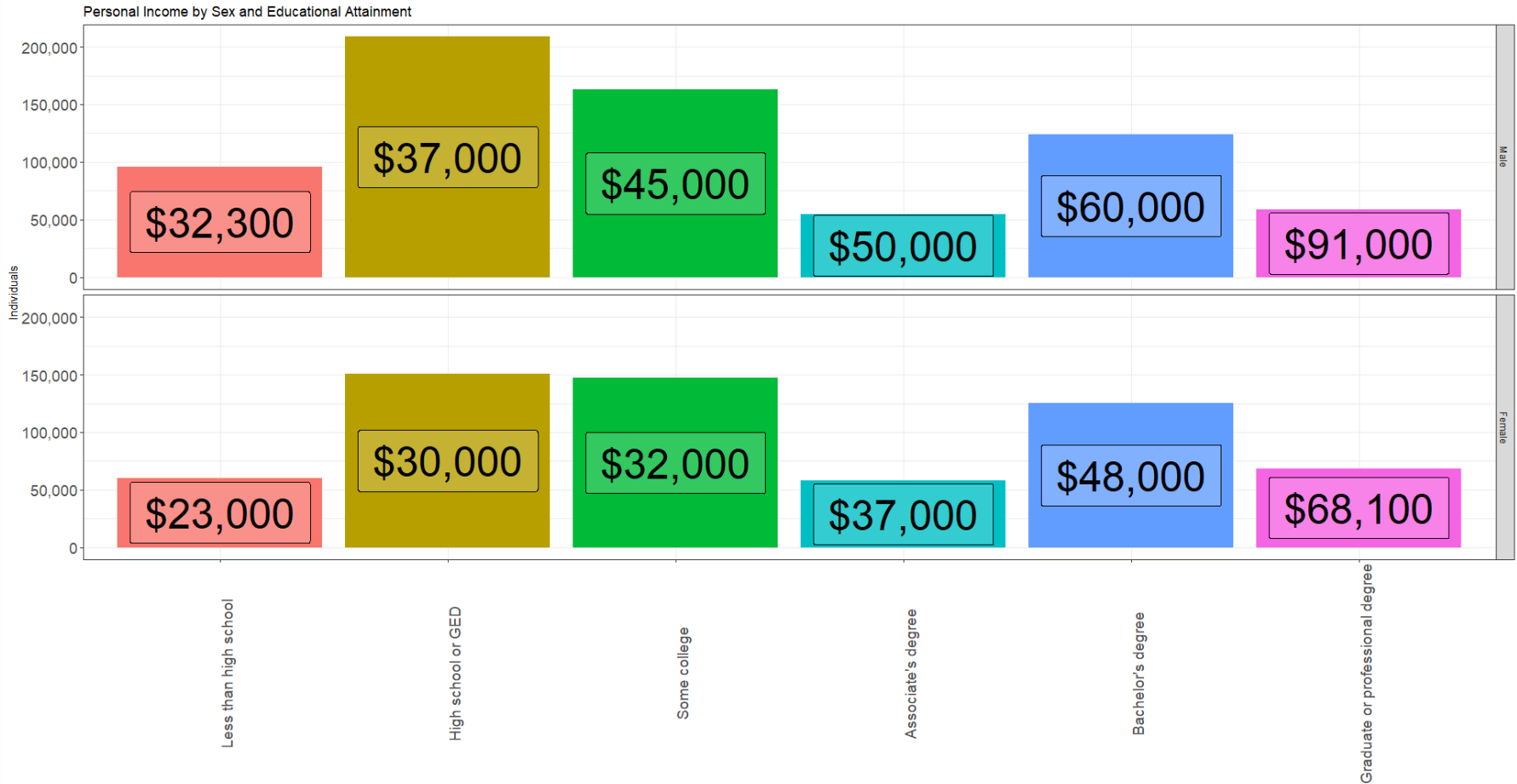
Group 2: Women with Children



Group 2: Women with Children

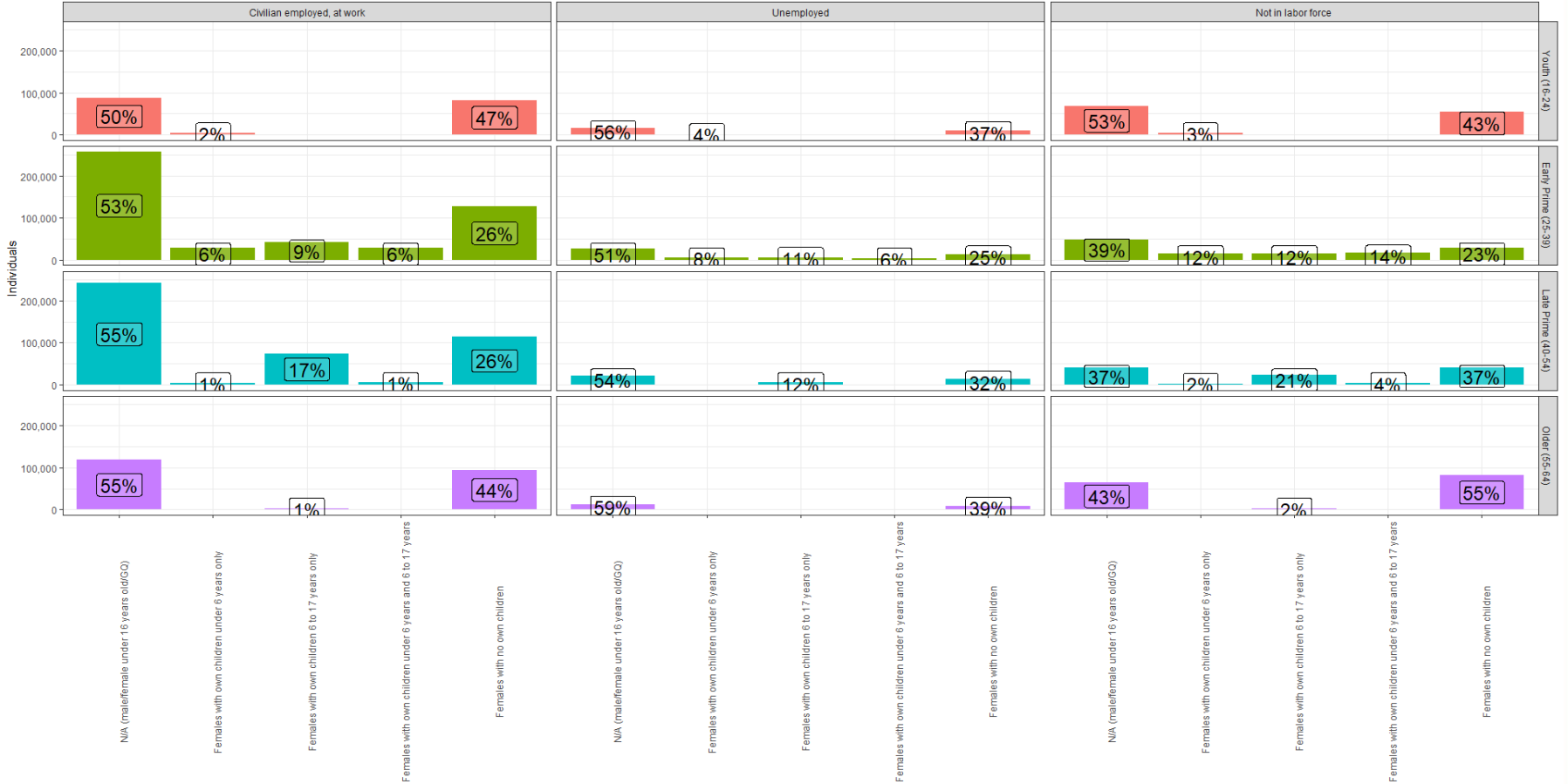


Group 2: Women with Children



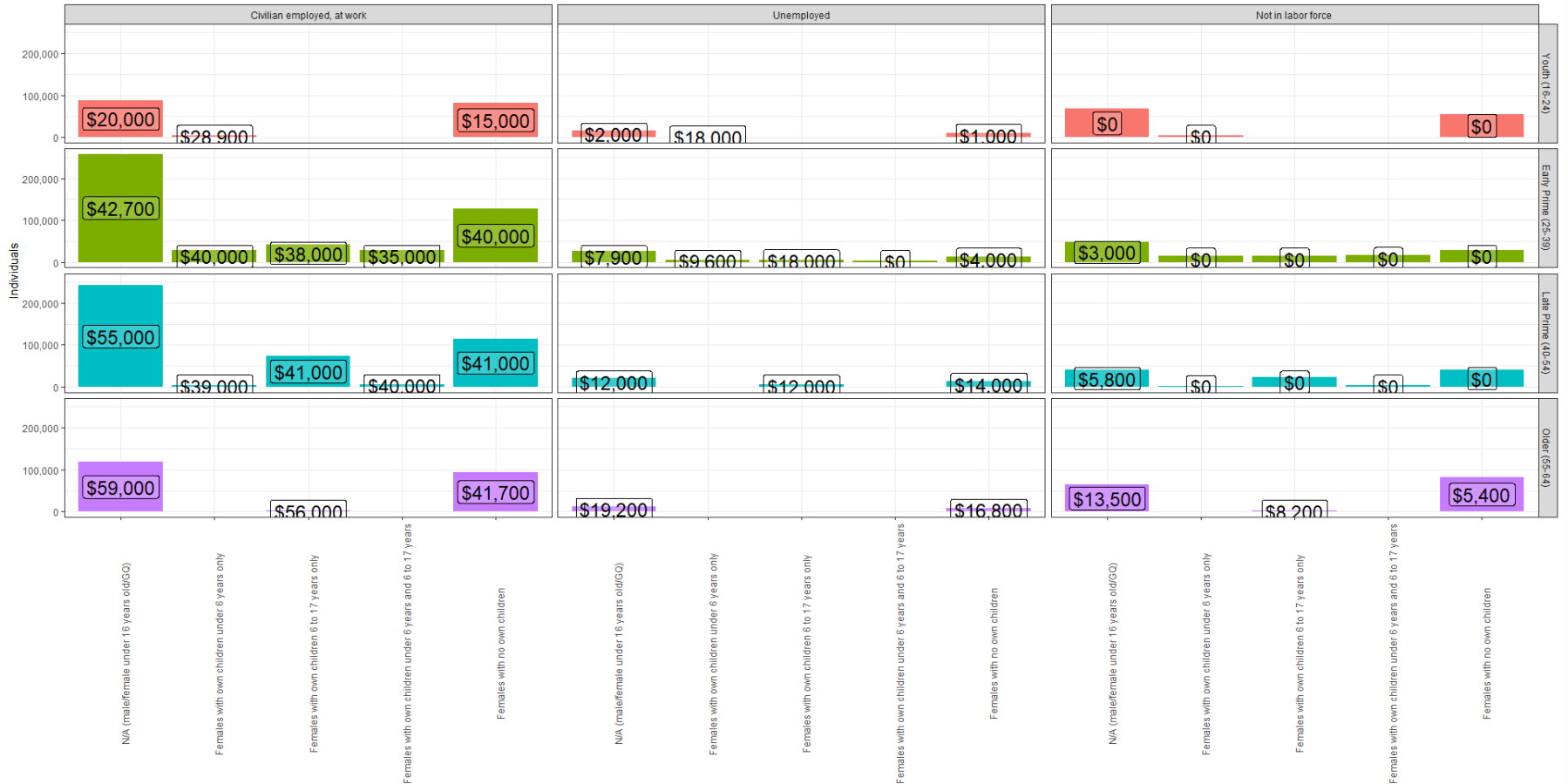
Group 2: Women with Children

Employment Status by Age, Sex, and Presence of Children



Group 2: Women with Children

Employment Status and Income by Age, Sex, and Presence of Children



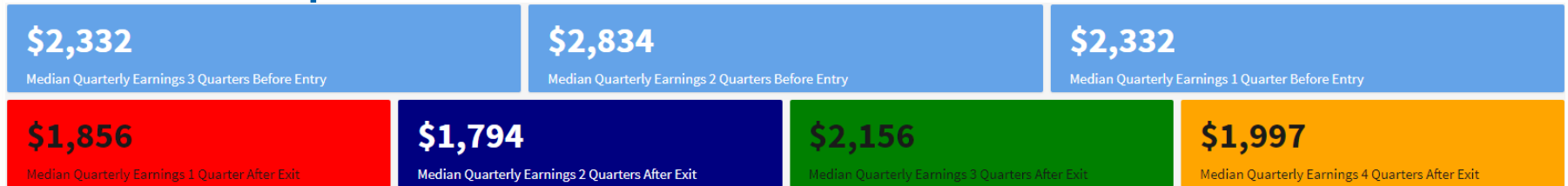
Group 2: Women with Children

Employment Status and Hours Worked by Age, Sex, and Presence of Children

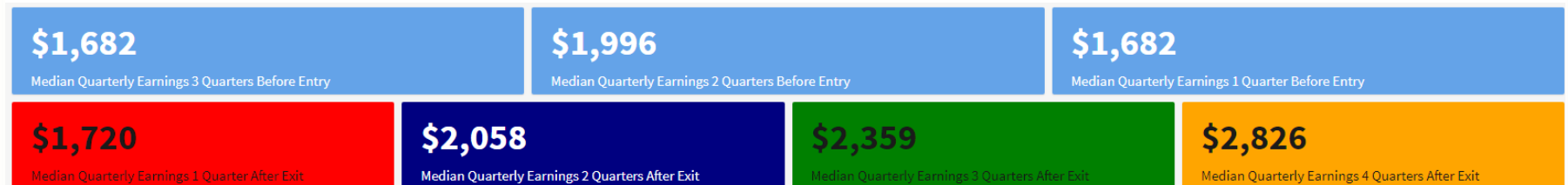


Group 2: Women with Children

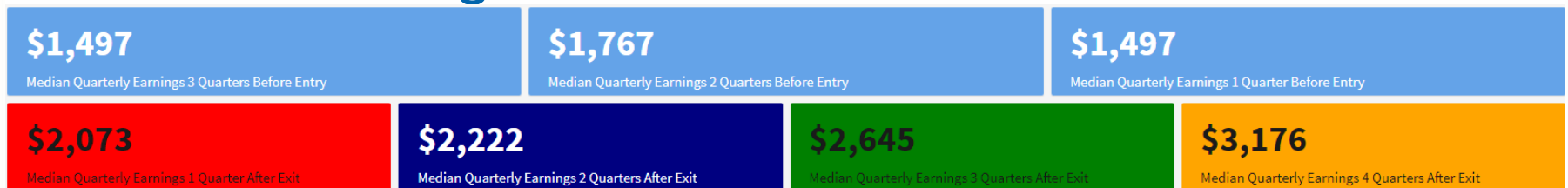
All Participants



All Single Parents

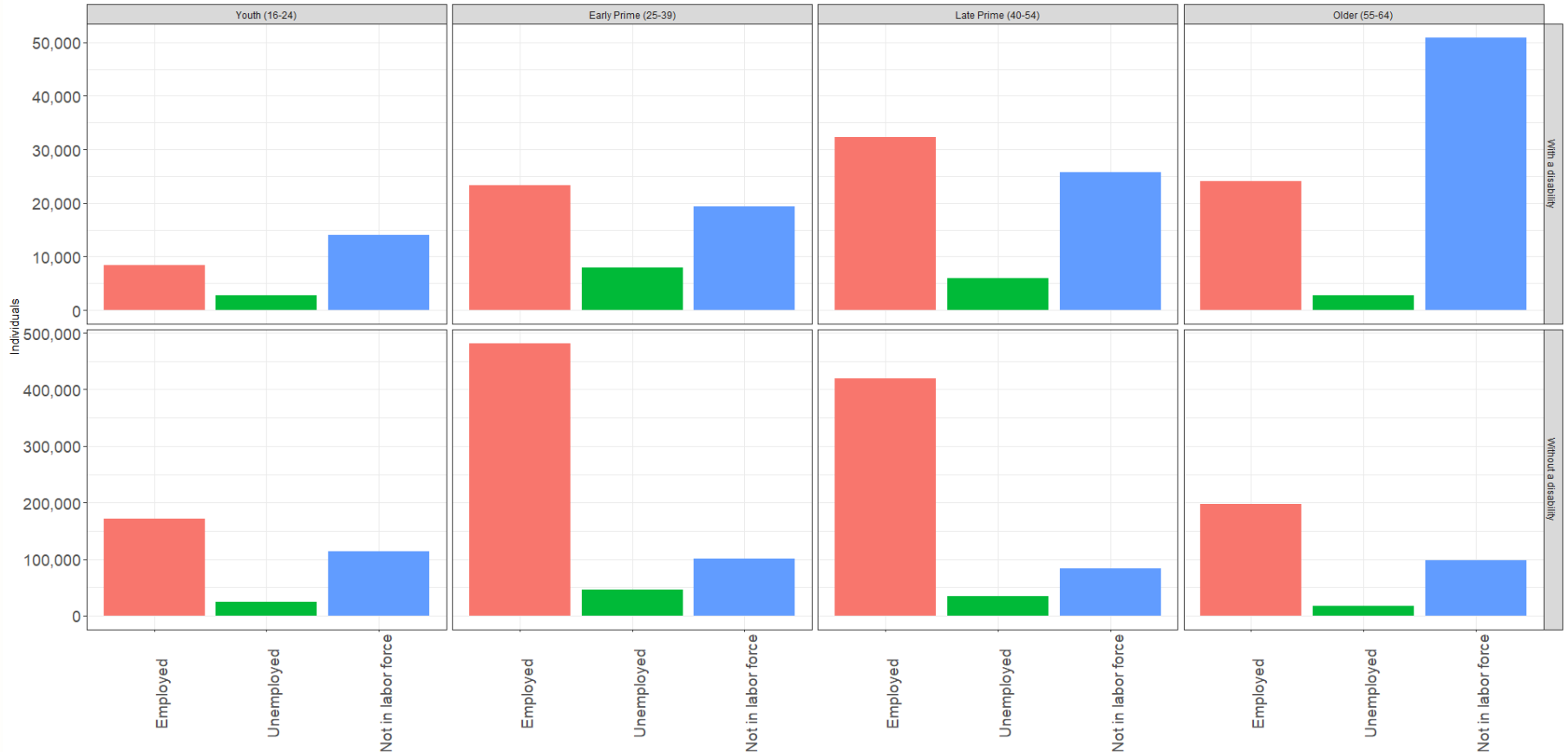


All Female Single Parents



Group 3: People with Disabilities

Labor Force Status for People with Disabilities
Population aged 16-64

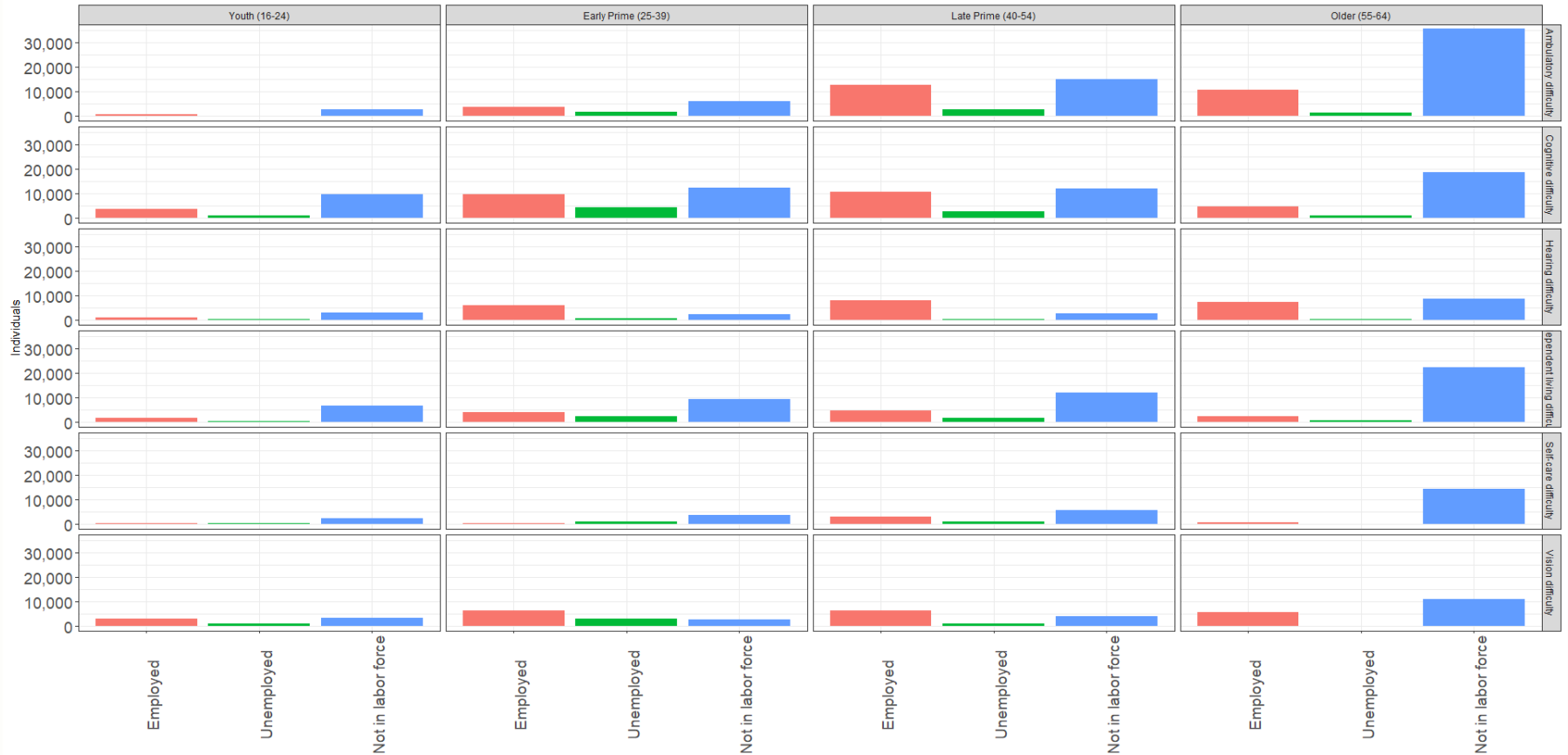


Data from 1-year American Community Survey, public use microdata file

Group 3: People with Disabilities

Labor Force Status for People with Disabilities

Population aged 16-64



Data from 1-year American Community Survey, public use microdata file

Group 3: People with Disabilities

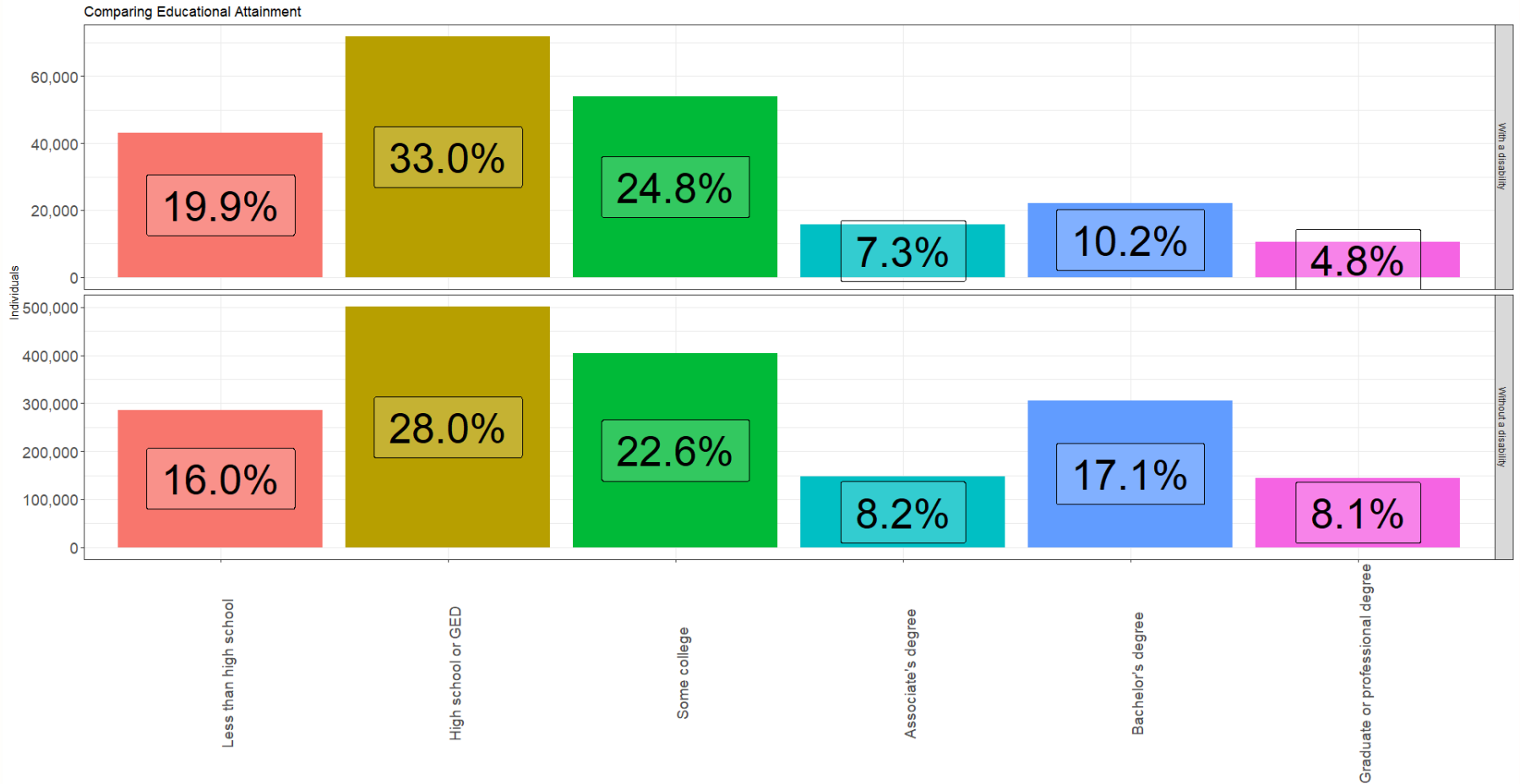
Labor Force Status for People with Disabilities

Population aged 16-64



Data from 1-year American Community Survey, public use microdata file

Group 3: People with Disabilities



Group 3: People with Disabilities

Comparing Educational Attainment

