



Labor Force Demographics

Presented to GWDB Barriers Subcommittee
January 2023

Chris Sewell, Director

Troy Jordan & Josh Marhevka, Deputy Directors

David Schmidt, Chief Economist

Prepared by the Research & Analysis Bureau

High Unemployment Report

NRS 232.935 5(b) mandates the Governor's Workforce Investment Board require all applicable agencies which provide workforce services to coordinate efforts and resources in order to reduce the rate of unemployment for specific demographic groups when certain thresholds are met:

1. When the unemployment rate is at least double (200 percent) the rate of unemployment for the county as a whole.
2. When the unemployment rate is at least four percentage points higher than the rate of unemployment for the county as a whole.
3. When the unemployment rate has been higher than the rate of unemployment for the county as a whole for at least three consecutive years.

This report is produced quarterly and is published here:

https://nevadaworkforce.com/_docs/Other-Publications/Demographics-Report/Current-Release.pdf

High Unemployment Report

Clark County

- Age groups exceeding at least one threshold: *16-19, 20-24, and 75+.*
- Race / Ethnicity groups exceeding at least one threshold: *Black, American Indian and Alaska Native, and Two or More Races.*
- Gender groups exceeding at least one threshold: *Female, Female with children 0-5 years old, and Female with children 0-5 and 6-17 years old.*
- Education groups exceeding at least one threshold: *Less than High School, High School or equivalent.*
- Poverty Status groups exceeding at least one threshold: *Below poverty level.*
- Other group exceeding at least one threshold: *People with any disability.*

High Unemployment Report

Washoe County

- Age groups exceeding at least one threshold: *16-19, 20-24.*
- Race / Ethnicity groups exceeding at least one threshold: *Black, Hispanic, American Indian and Alaska Native, Some Other Race, and Two or More Races.*
- Gender groups exceeding at least one threshold: *Female with children 0-5 and 6-17 years old.*
- Education groups exceeding at least one threshold: *Less than High School, and High School or equivalent.*
- Poverty Status groups exceeding at least one threshold: *Below poverty level.*
- Other group exceeding at least one threshold: *People with any disability.*

DETR's AB 354 Report - Rates

Most Current Data As Of: 2021 Data for all counties is a five-year average, unless otherwise indicated		Carson City	Churchill County	Clark County - 5 Year	Clark County - 1 Year	Douglas County	Elko County	Esmeralda County	Eureka County	Humboldt County	Lander County	Lincoln County	Lyon County	Mineral County	Nye County	Perishing County	Storey County	Washoe County - 5 Year	Washoe County - 1 Year	White Pine County	
		Carson City	Churchill County	Clark County - 5 Year	Clark County - 1 Year	Douglas County	Elko County	Esmeralda County	Eureka County	Humboldt County	Lander County	Lincoln County	Lyon County	Mineral County	Nye County	Perishing County	Storey County	Washoe County - 5 Year	Washoe County - 1 Year	White Pine County	
Unemployment Rate	Population	County Total: Ages 16+	4.6%	6.5%	7.8%	11.0%	3.8%	4.6%	4.9%	0.0%	4.6%	10.8%	4.0%	8.1%	13.1%	9.5%	11.9%	5.3%	5.0%	5.1%	3.8%
		County Total: Ages 20-64	4.0%	5.4%	7.2%	10.6%	3.7%	4.0%	2.5%	0.0%	5.1%	9.5%	3.8%	8.0%	14.4%	9.0%	12.5%	4.3%	4.3%	4.2%	3.4%
		County Total: Ages 25-64	3.5%	4.8%	6.8%	10.2%	3.3%	4.2%	2.5%	0.0%	4.1%	9.6%	2.9%	7.2%	13.9%	9.0%	13.8%	0.3%	4.0%	4.1%	3.7%
	Age	16-19	13.1%	18.1%	19.5%	16.9%	12.3%	15.9%	0.0%	0.0%	4.0%	66.7%	14.9%	13.2%	16.3%	15.5%	34.2%	0.0%	19.8%	14.6%	12.8%
		20-24	8.1%	11.0%	11.1%	13.8%	8.6%	2.5%	0.0%	0.0%	12.7%	8.5%	15.3%	15.9%	17.6%	8.3%	1.0%	42.6%	7.0%	4.2%	0.0%
		25-29	3.2%	4.6%	7.6%	11.7%	4.7%	1.9%	27.3%	0.0%	4.9%	8.1%	0.0%	9.9%	11.8%	19.2%	29.0%	0.0%	5.0%	3.9%	5.1%
		30-34	5.2%	11.7%	7.6%	11.9%	6.2%	6.7%	0.0%	0.0%	4.3%	23.7%	0.0%	4.2%	40.2%	13.3%	9.5%	0.0%	4.2%	6.1%	2.3%
		35-44	2.6%	5.0%	6.5%	10.0%	2.3%	4.3%	0.0%	0.0%	4.1%	16.8%	3.1%	7.2%	4.2%	6.8%	12.2%	0.0%	3.3%	2.5%	6.4%
		45-54	3.1%	3.3%	6.2%	9.5%	3.6%	2.7%	0.0%	0.0%	5.1%	3.4%	0.0%	6.0%	15.7%	5.5%	9.7%	0.0%	3.3%	3.5%	0.1%
		55-59	4.3%	2.7%	7.1%	9.3%	2.2%	7.3%	7.6%	0.0%	1.7%	0.0%	0.0%	6.8%	3.1%	10.2%	6.6%	1.7%	5.2%	6.0%	4.8%
		60-64	3.6%	3.6%	6.2%	8.6%	2.3%	3.1%	0.0%	0.0%	1.6%	0.0%	17.0%	10.8%	6.7%	4.4%	5.0%	0.0%	4.1%	5.5%	0.0%
		65-74	8.3%	13.2%	8.5%	13.9%	0.7%	5.0%	31.4%	0.0%	0.0%	12.7%	0.0%	6.1%	0.0%	19.6%	0.0%	6.8%	4.6%	13.0%	9.2%
		75+	3.2%	0.0%	11.3%	18.3%	1.3%	0.9%	0.0%	0.0%	0.0%	0.0%	0.0%	2.0%	0.0%	0.0%	0.0%	26.8%	7.0%	9.9%	0.0%
	Race / Ethnicity (Age 16 or Older)	White, Not Hispanic or Latino	4.1%	6.8%	7.0%	10.0%	3.8%	4.2%	2.8%	0.0%	3.2%	11.9%	4.1%	7.9%	13.1%	10.6%	9.0%	6.2%	4.5%	6.3%	3.7%
		Black	3.7%	0.0%	12.7%	18.7%	0.0%	0.9%	0.0%	0.0%	2.9%	100.0%	0.0%	10.3%	0.0%	21.0%	42.9%	0.0%	8.4%	7.5%	20.0%
		Hispanic	5.1%	4.2%	7.3%	10.1%	3.9%	4.6%	8.0%	0.0%	2.4%	6.4%	0.0%	9.3%	0.0%	3.4%	13.5%	0.0%	6.1%	2.8%	0.0%
		American Indian & Alaska Native	10.7%	11.6%	8.1%	7.7%	12.6%	7.3%	0.0%	0.0%	25.3%	8.1%	0.0%	8.3%	21.6%	21.0%	45.1%	0.0%	10.7%	0.0%	10.5%
		Asian	1.9%	0.0%	5.8%	9.6%	4.1%	0.0%	0.0%	0.0%	23.0%	0.0%	0.0%	2.9%	0.0%	0.0%	0.0%	0.0%	3.0%	1.8%	0.0%
		Pacific Islander or Native Hawaiian	0.0%	0.0%	7.6%	6.5%	0.0%	0.0%	0.0%	0.0%	0.0%	0.0%	0.0%	0.0%	0.0%	0.0%	0.0%	0.0%	8.4%	0.0%	0.0%
		Some Other Race	6.0%	0.0%	6.7%	9.0%	3.1%	10.8%	0.0%	0.0%	10.2%	0.0%	0.0%	7.3%	0.0%	3.0%	26.3%	0.0%	5.1%	1.4%	0.0%
		Two or More Races	6.2%	8.7%	10.7%	11.4%	1.1%	3.5%	18.5%	0.0%	8.4%	50.0%	0.0%	12.0%	0.0%	6.6%	0.0%	0.0%	6.2%	5.2%	12.5%
	Gender & Children (Age 20-64)	Male	4.8%	4.0%	7.1%	10.7%	3.5%	3.8%	0.0%	0.0%	5.5%	9.1%	5.6%	5.4%	19.3%	7.5%	13.8%	4.6%	4.5%	4.3%	4.4%
		Female	3.1%	7.2%	7.4%	10.4%	3.9%	4.2%	4.8%	0.0%	4.5%	10.4%	1.4%	11.2%	9.9%	11.0%	10.2%	3.8%	4.1%	3.9%	2.3%
		Female, With Children 0-17	1.2%	6.0%	7.4%	11.3%	3.3%	2.9%	0.0%	0.0%	5.1%	15.2%	3.8%	11.9%	0.0%	5.6%	17.7%	11.8%	3.6%	3.8%	4.3%
		Female, With Children 0-5	0.6%	23.8%	9.8%	13.9%	1.0%	0.0%	0.0%	0.0%	0.0%	8.7%	0.0%	11.3%	0.0%	10.6%	57.8%	33.3%	3.5%	2.4%	0.0%
		Female, With Children 0-5 & 6-17	0.1%	2.6%	8.9%	12.7%	10.1%	6.0%	0.0%	0.0%	13.6%	50.8%	0.0%	15.6%	0.0%	11.0%	0.0%	0.0%	5.2%	8.1%	22.0%
	Education (Age 25-64)	Female, With Children 6-17	1.8%	4.0%	6.1%	10.1%	2.2%	3.4%	0.0%	0.0%	3.6%	9.5%	4.4%	10.4%	0.0%	2.5%	25.0%	0.0%	3.2%	3.0%	0.0%
		Less than HS	5.3%	13.6%	7.4%	11.4%	12.8%	9.3%	16.2%	0.0%	11.2%	15.1%	0.0%	10.9%	11.8%	14.4%	20.8%	0.0%	6.6%	5.5%	15.1%
		HS or equiv	5.5%	3.2%	8.3%	11.9%	2.4%	6.2%	0.0%	0.0%	3.6%	19.9%	5.2%	7.0%	21.0%	9.2%	14.9%	0.0%	5.3%	5.8%	4.9%
		Some college or Associate deg	2.2%	5.9%	7.4%	12.4%	3.0%	2.8%	1.9%	0.0%	3.1%	3.4%	2.0%	6.0%	6.1%	8.3%	13.3%	0.0%	4.0%	4.3%	0.9%
Poverty Status (Age 20-64)	Bachelor's degree or higher	2.5%	3.0%	4.3%	6.0%	2.4%	0.8%	0.0%	0.0%	1.9%	0.0%	0.0%	7.9%	11.8%	5.4%	4.6%	0.8%	2.2%	2.6%	4.0%	
	Below poverty level	22.2%	16.5%	27.3%	36.9%	13.7%	19.6%	0.0%	0.0%	22.3%	91.9%	50.0%	43.8%	17.6%	30.4%	44.3%	0.0%	18.1%	18.2%	21.1%	
Other (20-64)	At or above poverty level	3.0%	4.8%	5.6%	7.8%	3.2%	2.7%	2.5%	0.0%	3.8%	4.9%	2.6%	6.4%	13.8%	6.5%	11.5%	4.4%	3.4%	3.4%	2.2%	
	People with any disability	8.2%	13.3%	13.4%	19.9%	4.9%	8.9%	0.0%	0.0%	8.1%	20.4%	36.4%	12.4%	9.3%	13.0%	1.3%	0.0%	9.2%	9.1%	3.4%	

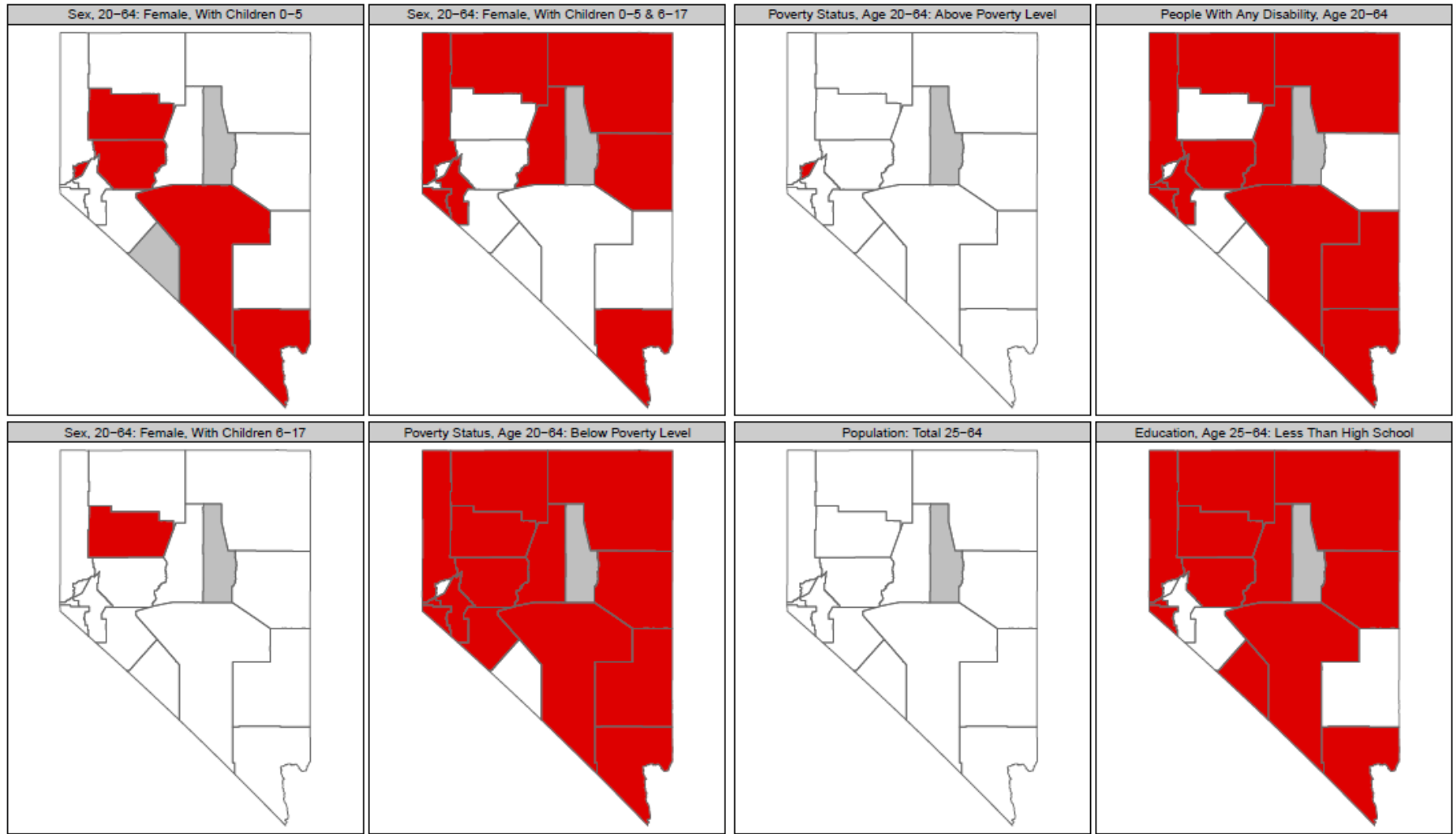
DETR's AB 354 Report - Numbers

Most Current Data As Of: 2021 Data for all counties is a five-year average, unless otherwise indicated		Carson City	Churchill County	Clark County - 5 Year	Clark County - 1 Year	Douglas County	Elko County	Esmeralda County	Eureka County	Humboldt County	Lander County	Lincoln County	Lyon County	Mineral County	Nye County	Pershing County	Storey County	Washoe County - 5 Year	Washoe County - 1 Year	White Pine County		
				1,327	801	88,294	127,945	852	1,275	20	0	399	308	70	2,204	245	1,717	288	81	12,890	13,378	140
All Unemployed People, Orange Indicates High Unemployment Rate	Population	County Total: Ages 16+	1,023	581	74,378	112,194	714	1,002	9	0	382	245	58	1,923	236	1,463	264	57	9,969	9,872	117	
		County Total: Ages 20-64	800	448	63,186	97,416	594	939	9	0	272	229	41	1,574	201	1,343	262	4	8,234	8,640	118	
		County Total: Ages 25-64	136	98	7,646	7,239	117	230	0	0	19	42	11	173	8	110	26	0	2,083	1,519	10	
	Age	16-19	220	157	11,479	14,342	112	68	0	0	110	17	18	349	34	111	2	57	1,819	1,026	0	
		20-24	101	62	10,131	15,265	89	57	3	0	47	19	0	296	14	331	117	0	1,620	1,264	22	
		25-29	164	138	10,382	17,301	139	218	0	0	40	82	0	123	117	257	22	0	1,299	1,980	7	
		30-34	148	106	16,617	26,194	91	250	0	0	65	103	9	411	17	250	67	0	1,712	1,397	66	
		35-44	178	81	14,620	22,757	157	157	0	0	96	24	0	324	39	219	33	0	1,626	1,733	1	
		45-54	124	34	6,991	9,033	67	190	6	0	9	0	0	191	9	228	13	3	1,194	1,353	22	
		55-59	79	34	4,305	6,899	58	58	0	0	12	0	0	32	217	6	61	9	0	751	982	0
		60-64	146	121	4,271	7,158	13	56	11	0	0	21	0	98	0	160	0	9	631	1,898	11	
		65-74	15	0	1,039	1,898	5	1	0	0	0	0	0	4	0	0	0	15	132	225	0	
		75+	Race / Ethnicity (Age 16 or Older)	White, Not Hispanic or Latino	761	614	32,671	45,392	661	776	9	0	188	244	69	1,550	145	1,299	158	82	7,145	9,809
	Black	15		0	16,300	24,530	0	2	0	0	1	44	0	28	0	111	3	0	538	382	3	
	Hispanic	376		70	26,104	38,304	125	309	6	0	54	44	0	513	0	111	64	0	3,937	1,946	0	
	American Indian & Alaska Native	64		45	891	1,254	42	89	0	0	67	11	0	43	99	74	64	0	344	0	22	
	Asian	20		0	7,071	12,304	20	0	0	0	26	0	0	10	0	0	0	0	480	297	0	
	Pacific Islander or Native Hawaiian	0		0	693	618	0	0	0	0	0	0	0	0	0	0	0	0	148	0	0	
	Some Other Race	143		0	9,642	14,944	36	215	0	0	84	0	0	179	0	45	44	0	1,305	476	0	
	Two or More Races	166		70	12,001	23,423	14	87	5	0	36	8	0	236	0	126	0	0	1,370	1,998	9	
Gender & Children (Age 20-64)	Male	669		252	39,464	60,447	354	568	0	0	238	160	50	722	150	699	182	36	5,653	5,440	83	
	Female	361		321	35,258	51,311	358	425	9	0	143	85	9	1,196	86	763	81	21	4,351	4,240	36	
	Female, With Children 0-17	51	91	11,835	17,839	100	112	0	0	61	67	9	532	0	126	67	21	1,296	1,363	28		
	Female, With Children 0-5	4	44	3,268	4,293	5	0	0	0	0	12	0	91	0	51	37	21	273	189	0		
	Female, With Children 0-5 & 6-17	1	11	2,656	3,460	49	38	0	0	35	32	0	184	0	39	0	0	352	533	28		
	Female, With Children 6-17	46	37	5,903	10,074	46	76	0	0	26	23	9	258	0	35	30	0	685	643	0		
Education (Age 25-64)	Less than HS	149	53	8,273	12,705	156	189	6	0	97	39	0	282	19	238	51	0	1,487	1,425	19		
	HS or equiv	320	99	20,687	29,658	107	455	0	0	80	149	32	454	132	543	119	0	2,542	2,647	62		
	Some college or Associate deg	194	236	22,941	37,881	205	245	3	0	66	40	9	562	29	464	79	0	2,585	2,674	10		
	Bachelor's degree or higher	135	56	11,109	17,299	132	34	0	0	27	0	0	269	22	96	12	3	1,554	2,001	28		
Poverty Status (Age 20-64)	Below poverty level	276	86	21,662	36,617	114	360	0	0	120	124	20	446	42	509	27	0	2,601	2,248	48		
	At or above poverty level	730	476	53,320	74,815	591	627	9	0	264	120	39	1,474	194	949	235	56	7,377	7,576	71		
Other (20-64)	People with any disability	159	82	8,259	14,538	54	204	0	0	43	57	32	231	7	218	2	0	1,245	1,225	8		

DETR's AB 354 Report - Maps



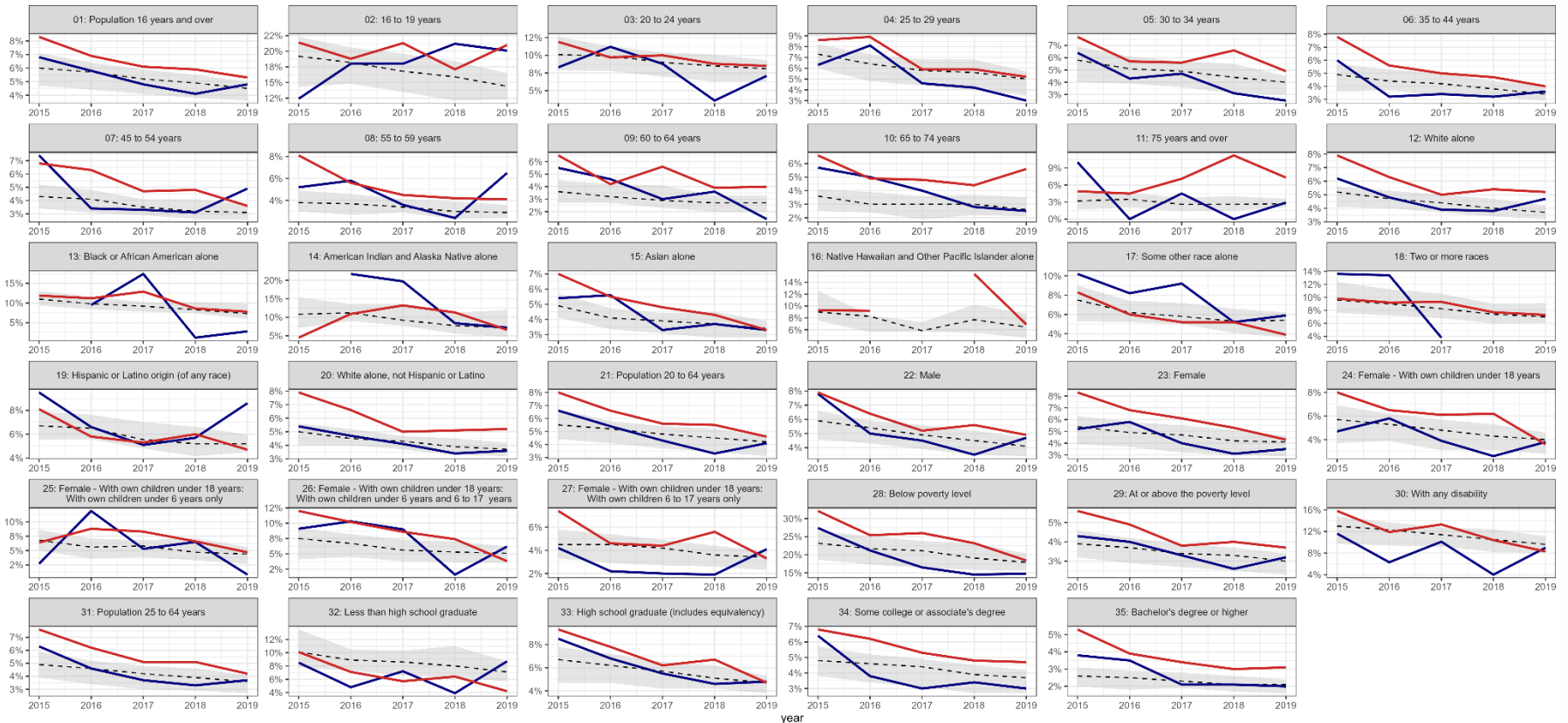
DETR's AB 354 Report - Maps



Unemployment Trends – 1 Year

Unemployment Rate by Demographic Group

Blue line is Washoe County, Red Line is Clark County, grey area is 20th to 80th percentile for all states

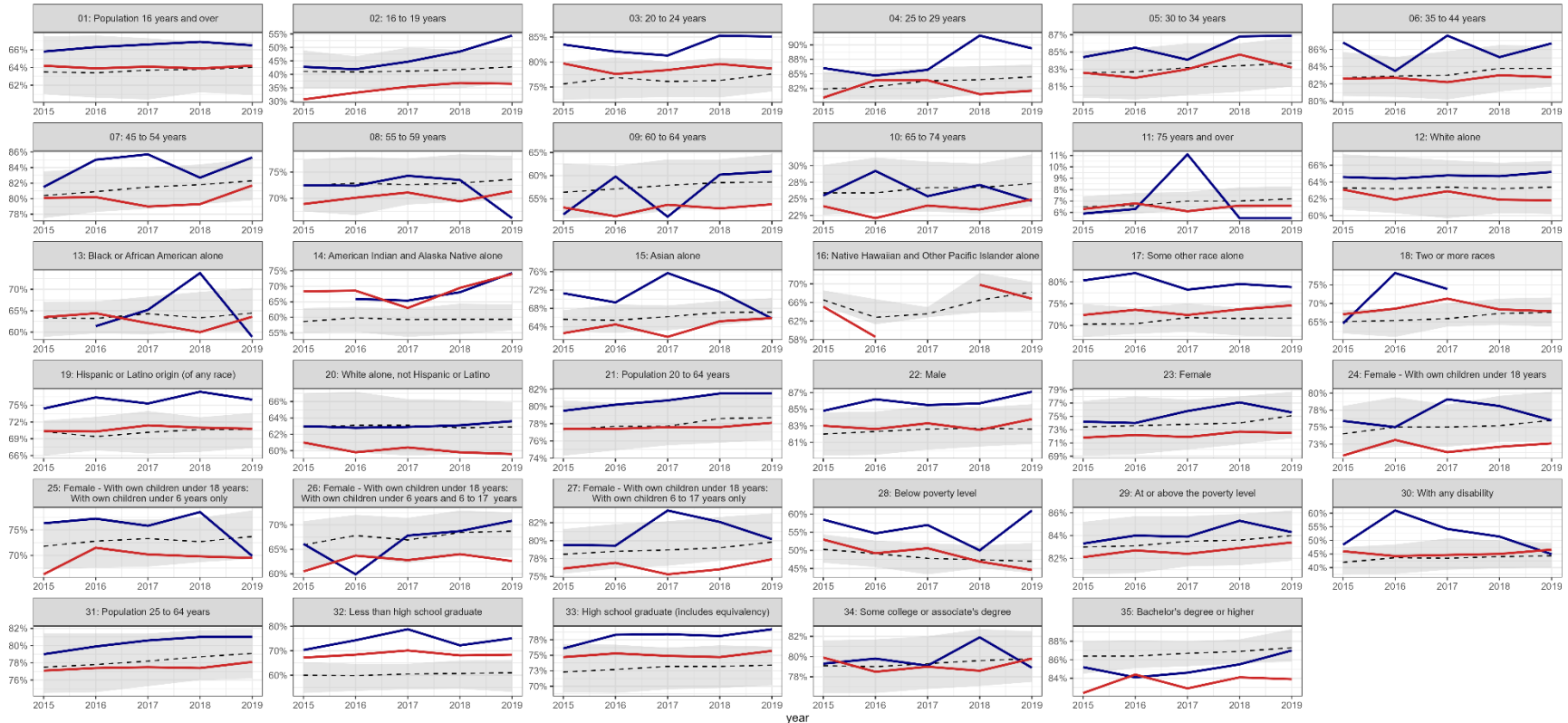


Data from 1-year American Community Survey Table S2301

Beyond Unemployment - Participation

Labor Force Participation Rate by Demographic Group

Blue line is Washoe County, Red Line is Clark County, grey area is 20th to 80th percentile for all states



Data from 1-year American Community Survey Table S2301

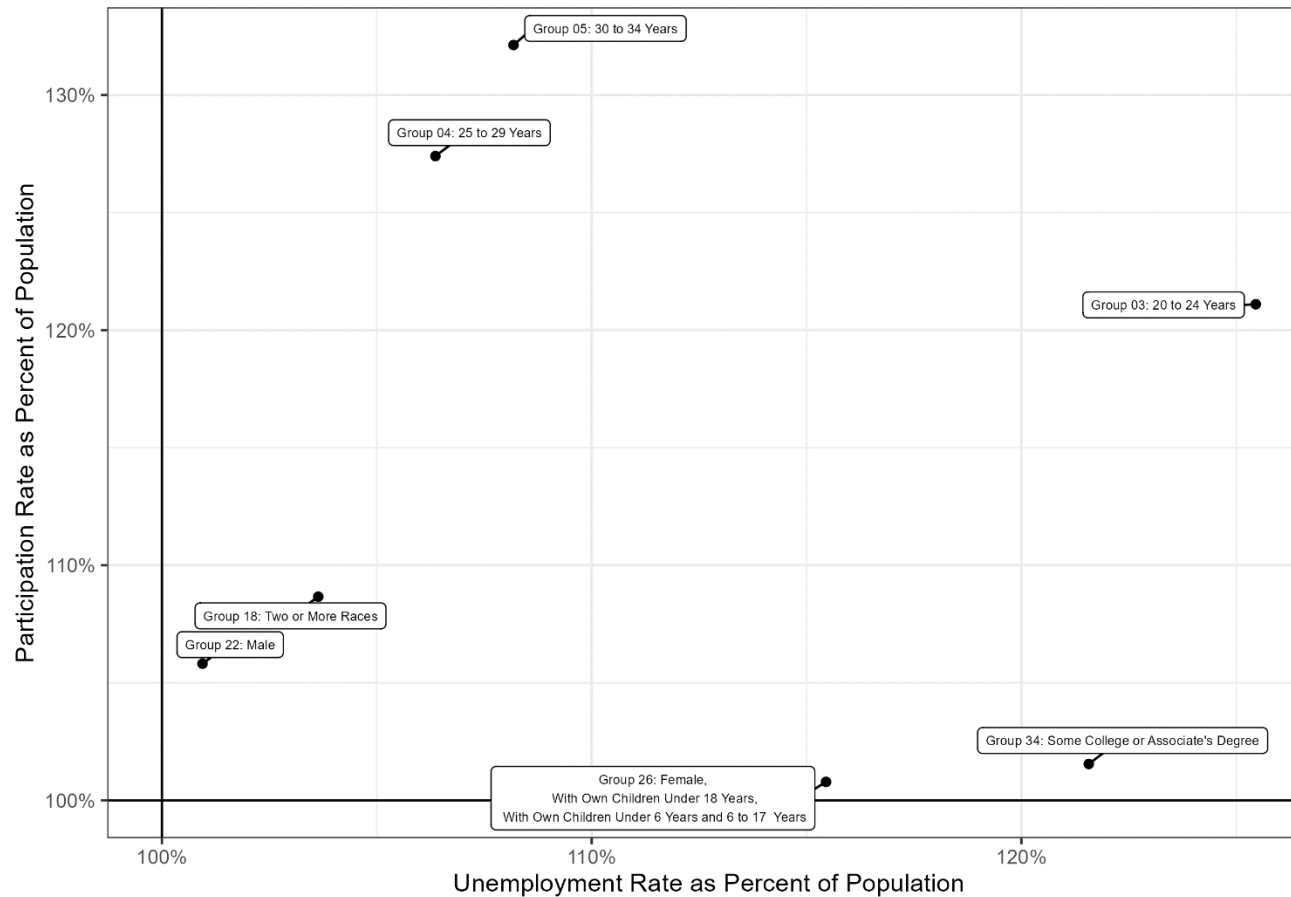
Intersection of Unemployment and Participation – Clark County

Unemployment and Labor Force Participation Compared to Population
Clark County, 2021 American Community Survey



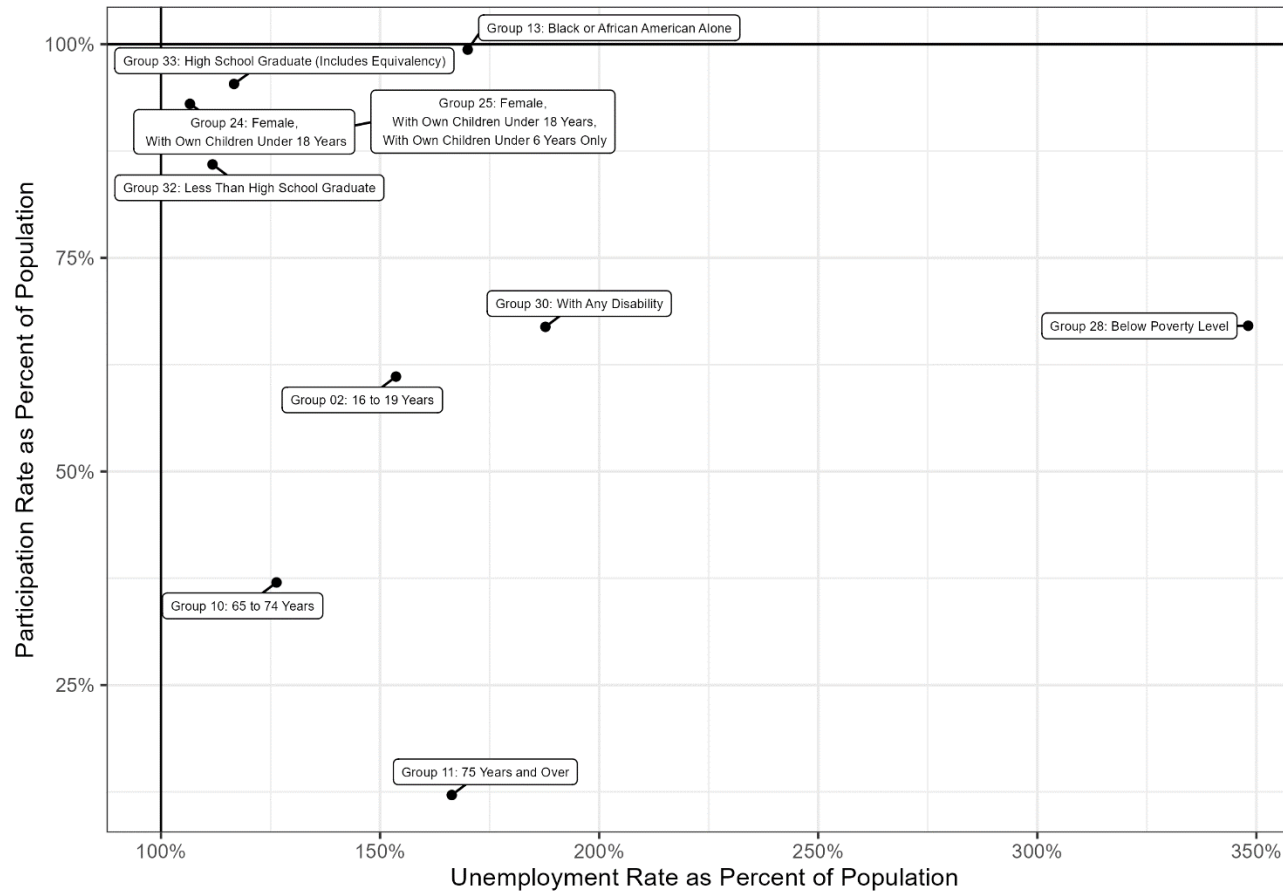
Intersection of Unemployment and Participation – Clark County

Unemployment and Labor Force Participation Compared to Population
High Unemployment, High Participation, Clark County, 2021 American Community Survey



Intersection of Unemployment and Labor Force Participation – Clark County

Unemployment and Labor Force Participation Compared to Population
 High Unemployment, Low Participation, Clark County, 2021 American Community Survey



Intersection of Unemployment and Participation – Washoe County

Unemployment and Labor Force Participation Compared to Population
High Unemployment, Low Participation, Washoe County, 2021 American Community Survey

